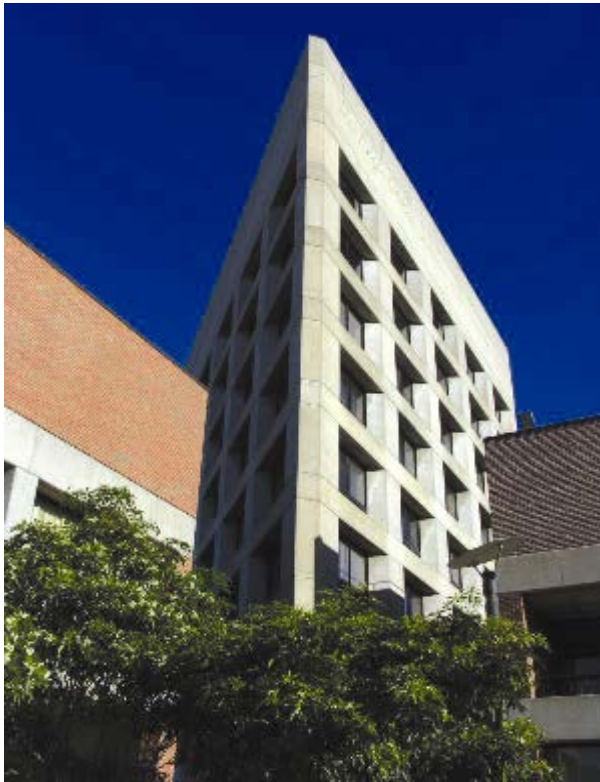


LANEY COLLEGE  
CATALOG  
SUPPLEMENT  
2013-15



Laney College  
Office of Instruction  
900 Fallon Street  
Oakland, California 94607

Phone: (510) 464-3219  
Fax: (510) 464-3213  
[www.laney.edu](http://www.laney.edu)  
Published August 2014



# TABLE OF CONTENTS

	<b>Page</b>
<b>Accuracy Statement</b>	<b>4</b>
<b>Course Additions</b>	<b>5</b>
<b>Course Changes</b>	<b>34</b>
<b>Course Corrections</b>	<b>38</b>
<b>Course Deactivations</b>	<b>39</b>
<b>Program Additions</b>	<b>41</b>
<b>Program Changes</b>	<b>44</b>
<b>Appendices:</b>	
<b>General Education Requirements for AA/AS Degrees 2014-2015 (Advising Sheet)</b>	<b>45</b>
<b>California State University General Education Breadth Requirements 2014-2015(Advising Sheet)</b>	<b>49</b>
<b>Intersegmental General Education Transfer Curriculum (IGETC) 2014-2015 (Advising Sheet)</b>	<b>53</b>

## **CATALOG SUPPLEMENT 2013-15**

The Laney College Catalog Supplement for 2013-15 is a summary of additions, deactivations, and changes that have been made in curriculum and policies affecting students since the publication of the 2013-15 Catalog. Changes to curriculum are made on an ongoing basis throughout the academic year and are usually effective for a subsequent term. All individual course additions and changes show the effective term at the end of each entry. All program additions and changes show the effective term after the program title. These notations are as follows: M13 = Summer 2013, F13 = Fall 2013, S14 = Spring 2014, M14 = Summer 2014, F14 = Fall 2014, S15 = Spring 2015, M15=Summer 2015

### **ACCURACY STATEMENT**

Laney College endeavors to present its programs and policies to the public accurately and fairly. Those responsible for the preparation of the Catalog, the Catalog Supplement, and Schedules of Classes, and all other public announcements make every effort to ensure that the information presented is correct and up-to-date. However, the College reserves the right to add, amend, or repeal the curriculum and any rules, regulations, policies and procedures. The College assumes no responsibility for program changes or publication errors beyond its control.

## COURSE ADDITIONS

DEPT/NO.	COURSE TITLE/INFORMATION	EFF
ANTHR 2	<p><b>Introduction to Archaeology and Prehistory</b> 3 units, 3 hours lecture (GR) Acceptable for credit: CSU/UC pending</p> <p>World prehistory as reconstructed from the archaeological and physical evidence of cultural beginnings through the early agricultural civilizations of Africa, America and Euro-Asia: Archaeological methods, techniques, and problems. 2202.00</p>	F14
ANTHR 14	<p><b>American Mosaic: The Cultures of the United States</b> 3 units, 3 hours lecture (GR) Acceptable for credit: CSU/UC pending</p> <p>Study of the cultures of the United States from the perspectives of ethnic identity, ethnic relations, sex and gender, socio-economics class, religion, music and politics: Emphasis on the anthropological methods and approaches to enhance exploration of the United States history and socio-cultural lifeways. 2202.00</p>	M14
ANTHR 19	<p><b>The Anthropology of Sex and Gender</b> 3 units, 3 hours lecture (GR)</p> <p>Formation of sexual and gender identities from a cross-cultural, cross-societal perspective: Biological and historical understandings of male/female difference. Female body, alternative sexualities, female power in the public sphere, mother-child relations and gender-related violence. Consideration of contemporary, globalized societies and gendered behavior in smaller-scale societies. 2202.00</p>	F14
ARCH 211A	<p><b>Basic Computerized Drafting Techniques</b> 1 unit, 0.5 hours lecture/1.5 hours lab (GR)</p> <p>Basics of computerized drafting: Principles of applied geometry underlying orthographic and pictorial drawings, developing plans, elevations, sections and isometrics.</p> <p>Not open for credit to students who have completed or are currently enrolled in WDTEC 211A. 0953.00</p>	F14
ART 46	<p><b>2-D Design</b> 3 units, 2 hours lecture/4 hours lab (GR or P/NP) Acceptable for credit: CSU/UC</p> <p>Fundamental elements of design: Dot, line, plane, volume, space, color, texture, and light; laboratory experience in visual composition and layout emphasizing in two dimensional design. 1002.10</p>	S14
ART 47	<p><b>3-D Visual Design</b> 3 units, 2 hours lecture/4 hours lab (GR or P/NP) Acceptable for credit: CSU/UC</p> <p>Introduction to the concepts, applications, and historical references related to three-</p>	S14

## COURSE ADDITIONS

dimensional design and spatial composition: Elements and organizing principles of design as they apply to three-dimensional space and form. Development of visual vocabulary for creative expression through lecture presentations and use of appropriate materials for non-representational three-dimensional studio projects. 1002.10

- ART 137**      **Beginning Figure Drawing and Composition**      F13  
 3 units, 2 hours lecture/4 hours lab (GR or P/NP)  
*Prerequisite: ART 20*  
 Acceptable for credit: CSU/UC
- Introduction to drawing the human figure from observation using a wide variety of drawing media and techniques: Human anatomy, historical and contemporary roles of figure drawing in the visual arts with descriptive and interpretative approaches to drawing the figure. 1002.10
- ART 144**      **Eco Art Matters Continuing Food and Water**      F13  
 3 units, 2 hours lecture/3 hours lab (GR or P/NP)  
*Prerequisite: ART 141*  
 Acceptable for credit: CSU/UC
- Continuation of the study and art practices based on environmental and social justice issues: Extensive research on an issue of choice, with an emphasis on Food and Water. 1001.00
- ART 145**      **Advanced Eco Art Matters: Community Outreach and Collaboration**      F13  
 3 units, 2 hours lecture/4 hours lab (GR or P/NP)  
*Prerequisite: ART 141*  
 Acceptable for credit: CSU/UC
- Continuation of ART 141 with an emphasis on social justice, community outreach and collaboration projects for a public art exhibition. 1001.00
- ART 146**      **Special Projects: EcoArt Matters**      F13  
 3 units, 2 hours lecture/4 hours lab (GR or P/NP)  
*Prerequisite: ART 145*  
 Acceptable for credit: CSU/UC
- Continuation study: advanced research and art practice of environmental and social justice issues. 1001.00
- ART 165**      **Beginning Figure Sculpture**      F13  
 3 units, 2 hours lecture/4 hours lab (GR or P/NP)  
 Acceptable for credit: CSU/UC
- Introduction to direct modeling from the live model: Direct observation sketching, clay and other media, introduction to human anatomy and historical and contemporary roles of figurative sculpture in the visual arts, descriptive and interpretive approaches to sculpting the figure. 1002.20
- ART 176**      **Beginning Sculpture**      F13  
 3 units, 2 hours lecture/4 hours lab (GR or P/NP)  
 Acceptable for credit: CSU/UC

## COURSE ADDITIONS

Introduction to three-dimensional sculptural principles, techniques, and concepts utilizing a wide range of materials and practices: Various sculpture methods with attention to creative self-expression and historical context. 1002.20

**ART 202**      **Fundamentals of Drawing**      F13  
2 units, 1 hour lecture/3 hours lab (GR or P/NP)

Drawing techniques in relation to drawing as a fine art: Study of shape, form, and space in black and white. 1002.10

**ART 205**      **Fundamentals of Painting**      F13  
2 units, 1 hour lecture/3 hours lab (GR or P/NP)

Basic painting techniques and composition using oils, acrylics, and/or mixed media. May include live models. 1002.10

**ART 208**      **Foundations of Ceramics**      F13  
2 units, 1 hour lecture/3 hours lab (GR or P/NP)

Introduction to Ceramics: Wheel throwing and hand-building instruction, glazing and firing techniques. 1002.30

**ART 230**      **Beginning Art Gallery Management**      F13  
3 units, 2 hour lecture/3 hours lab (GR or P/NP)

Practical experience in all phases of art exhibit: Research in art exhibit design and philosophy; includes field trips. 1002.00

**ART 231**      **Continuing Art Gallery Management**      S15  
3 units, 2 hour lecture/3 hours lab (GR or P/NP)

Continuation of ART 230: Continued research and related theory; budget analysis; lighting techniques and installation; practical experience in all phases of art exhibit; research in art exhibit design and philosophy; includes field trips. 1002.00

**ART 232**      **Intermediate Art Gallery Management**      S15  
3 units, 2 hour lecture/4 hours lab (GR or P/NP)

Continuation of ART 231: Continued research and application of art gallery related theory; budget analysis and management; lighting techniques and installation; practical experience in all phases of art exhibit; advanced research in art exhibit design and philosophy; including unsupervised field trips. 1002.00

**ART 233**      **Advanced Art Gallery Management**      S15  
3 units, 2 hour lecture/4 hours lab (GR or P/NP)

Continuation of ART 232: Advanced research and related theory; budget analysis; lighting techniques and installation; practical experience in all phases of art exhibit; research in art





## COURSE ADDITIONS

	3 units, 10 hours lab (GR or P/NP) Acceptable for credit: CSU/UC Repeatable 3 times	
	Fundamentals of intercollegiate competition: Theory, team organization, technique, strategy, and leadership.	0835.50
<b>ATHL 60</b>	<b>Track and Field Foundations</b> 3 units, 10 hours lab (GR or P/NP) Acceptable for credit: CSU/UC Repeatable 3 times	F13
	Fundamentals of intercollegiate competition: Review of the fundamental aspects of track and field; sprinting, the jumps, the throws, hurdling and middle/long distance running for intercollegiate competition or general knowledge of the sport.	0835.50
<b>ATHL 73</b>	<b>Volleyball Team Pre-season Preparation</b> 0.5 units, 2 hours lab (GR or P/NP) Acceptable for credit: CSU/UC Repeatable 3 times	F13
	Intercollegiate Volleyball Team Pre-season training. The course includes fundamentals of intercollegiate competition: Team competition in volleyball: Advanced skill development, offensive and defensive strategies.	0835.50
<b>CHIN 25A</b>	<b>Chinese Character Writing I</b> 3 units, 3 hours lecture (GR or P/NP) Acceptable for credit: CSU	F14
	Introductory course for learners of Chinese character writing: Emphasis on the construction of Hanzi (Chinese characters), including basic strokes, the proper stroke order, and the most frequently used radicals; provides the opportunity to practice the art of ancient calligraphy.	1007.00
<b>CHIN 25B</b>	<b>Chinese Character Writing II</b> 3 units, 2 hours lecture/2 hours lab (GR or P/NP) Acceptable for credit: CSU	F14
	Continuation CHIN 25A: Emphasis on the construction of Hanzi (Chinese characters), including basic strokes, the proper stroke order, and the most frequently used radicals; provides the opportunity to practice the art of ancient calligraphy.	1007.00
<b>CIS 25B</b>	<b>C++ Programming Language II</b> 4 units, 3 hours lecture/3 hours lab (GR or P/NP) <i>Prerequisite: CIS 25 or 36A</i>	F14
	Continuation of CIS 25. Object-oriented program design using the C++ programming language: Designing and programming with exceptions, threads, file input/output (I/O); networking and graphic classes; developing code using tools such as .NET; and working with projects in areas such as animation.	0707.10
<b>CIS 77A</b>	<b>Network Architecture I</b> 4 units, 3 hours lecture/3 hours lab (GR or P/NP)	S15

## COURSE ADDITIONS

Introduction to current and emerging network architecture technology: Safety, network terminology, protocols, network standards, LANs, WANs, OSi model, cabling options, routers, and topologies. 0707.10

<b>COUN 201</b>	<b>Orientation to College: Student Success and Support Program</b> 1 unit, 1 hour lecture (P/NP)	F14
	Information for new students: College programs, policies and procedures, campus resources, assessments; and abbreviated Student Educational Plan (SEP).	4930.00
<b>CULIN 234</b>	<b>Introduction to Cooking Techniques</b> 4 units, 2 hours lecture/6 hours lab (GR)	S15
	Designed to introduce students to food preparation of and terminology; Basic preparation of salads, sandwiches, breakfast cooking and knife cuts, sanitation and safety; professional responsibilities.	1306.30
<b>DANCE 8A</b>	<b>Dance Composition and Choreography</b> 3 units, 1 hour lecture/6 hours lab (GR) <i>Prerequisite: DANCE 64</i> <i>Recommended preparation: DANCE 68</i> Acceptable for credit: CSU/UC	F13
	Study and development of skills, technique, choreographic devices and elements for dance composition: Improvisation, accompaniment, ideas culminating in the presentation of original movement or performance and evaluation.	1008.00
<b>DANCE 60</b>	<b>Ballet I</b> 1 unit, 3 hours lab (GR) Acceptable for credit: CSU/UC	F13
	Study and development of beginning skills and techniques of ballet: Body alignment, placement, positions of the feet, carriage of the arms and musicality.	1008.00
<b>DANCE 61</b>	<b>Ballet II</b> 1 unit, 3 hours lab (GR) Acceptable for credit: CSU/UC	F13
	Intense study and development of the skills and techniques of ballet: Body alignment, placement, positions of the feet, carriage of the arms and musicality and movement quality.	1008.00
<b>DANCE 62</b>	<b>Ballet III</b> 1 unit, 3 hours lab (GR or P/NP)	F14
	Intense study and development of the skills and techniques of ballet of an advanced/intermediate level: Including continued study of classical alignment, adagio, petit and grand allegro.	1008.00

## COURSE ADDITIONS

<b>DANCE 63</b>	<p><b>Ballet IV</b> 1 unit, 3 hours lab (GR or P/NP)</p> <p>Intense study and development of the skills and techniques of ballet of advanced level: Including continued study of classical alignment, adagio, petit and grand allegro. 1008.00</p>	F14
<b>DANCE 64</b>	<p><b>Jazz Dance I</b> 1 unit, 3 hours lab (GR) Acceptable for credit: CSU/UC</p> <p>Study and development of the skills and techniques of jazz dance: Development of beginning to intermediate level proficiency in skills related to rhythm, dance production, stagecraft and choreography. 1008.00</p>	F13
<b>DANCE 65</b>	<p><b>Jazz Dance II</b> 2 units, 1 hour lecture/3 hours lab (GR) Acceptable for credit: CSU/UC</p> <p>Study and development of the skills and techniques of jazz dance: Development of intermediate to advanced level proficiency in skills/knowledge related to body awareness and body mechanics, musicality, choreography and evolution of jazz dance forms. 1008.00</p>	F13
<b>DANCE 66</b>	<p><b>Jazz Dance III</b> 2 units, 1 hour lecture/3 hours lab (GR) <i>Recommended preparation: DANCE 65</i> Acceptable for credit: CSU/UC</p> <p>Study and development of the skills and techniques of jazz dance: Intermediate-advanced proficiency in dance mechanics, dance anatomy, musicality, jazz dance choreography, dance production, stage performance and dance history. 1008.00</p>	F13
<b>DANCE 67</b>	<p><b>Jazz Dance IV</b> 2 units, 1 hour lecture/3 hours lab (GR) <i>Recommended preparation: DANCE 66</i> Acceptable for credit: CSU/UC</p> <p>Study and development of the skills and techniques of jazz dance: Advanced proficiency in dance mechanics, dance anatomy, musicality, jazz dance choreography, dance production, stage performance and dance history. 1008.00</p>	F13
<b>DANCE 68</b>	<p><b>Modern Dance I</b> 1 unit, 3 hours lab (GR) Acceptable for credit: CSU/UC</p> <p>Study and development of beginning skills and techniques: Evolution of modern dance from its origins to present day. 1008.00</p>	F13
<b>DANCE 69</b>	<p><b>Modern Dance II</b> 2 units, 1 hour lecture/3 hours lab (GR)</p>	F13

## COURSE ADDITIONS

*Prerequisite: DANCE 40*  
Acceptable for credit: CSU/UC

Study and development of intermediate skills and technique in Modern dance: Evolution of modern dance from its origins to present day and the development of individual movement styles. 1008.00

**DANCE 70**      **Modern Dance III**      F13  
2 units, 1 hour lecture/3 hours lab (GR)  
*Prerequisite: DANCE 69*  
Acceptable for credit: CSU/UC

Study and development of advanced/intermediate skills and technique in Modern dance: Proficiency in dance mechanics, dance anatomy, history, the development of choreography, individual movement styles and performance. 1008.00

**DANCE 71**      **Modern Dance IV**      F13  
2 units, 1 hour lecture/3 hours lab (GR)  
*Prerequisite: DANCE 70*  
Acceptable for credit: CSU/UC

Study and development of advanced skills and technique in Modern dance: Proficiency in dance mechanics, dance anatomy, the historical, philosophical and social evolution of modern dance from its origins to present day, choreography, performance and repertory work. 1008.00

**DANCE 72**      **Jazz Tap I**      F13  
1 unit, 3 hours lab (GR or P/NP)  
Acceptable for credit: CSU/UC

Study and development of beginning skills and techniques of Jazz Tap dance: Evolution of tap dance from its African origins to the present and its influences on jazz dance. 1008.00

**DANCE 73**      **Jazz Tap II**      F13  
1 unit, 3 hours lab (GR or P/NP)  
Acceptable for credit: CSU/UC

Intense study and development of beginning/intermediate skills and techniques of Jazz Tap dance: Evolution of tap dance from its African origins to the present; influence on jazz dance; study and development of related skills and techniques. 1008.00

**DANCE 76**      **West African Dance I**      F13  
1 unit, 3 hours lab (GR or P/NP)  
Acceptable for credit: CSU/UC

Study of the skills and techniques of traditional West African dance forms: History, folklore, culture, language and costumes of various indigenous ethnic groups. 1008.00

**DANCE 77**      **West African Dance II**      F13  
1 unit, 3 hours lab (GR or P/NP)

## COURSE ADDITIONS

Acceptable for credit: CSU/UC

Intense study of the skills and techniques of traditional West African dance forms: History, folklore, culture, language and costumes of various indigenous ethnic groups.  
1008.00

**DANCE 78**      **West African Dance III**      F13  
1 unit, 3 hours lab (GR or P/NP)  
Acceptable for credit: CSU/UC

Intense study of the skills and techniques of traditional West African dance forms from Senegal and Guinea: History, folklore, culture, language and costumes of indigenous ethnic groups.      1008.00

**DANCE 79**      **West African Dance IV**      F13  
1 unit, 3 hours lab (GR or P/NP)  
Acceptable for credit: CSU/UC

Intense study of the skills and techniques of traditional West African dance forms from Mali and Liberia: History, folklore, culture, language and costumes of indigenous ethnic groups.      1008.00

**DANCE 80**      **Haitian Dance I**      F13  
1 unit, 3 hours lab (GR or P/NP)  
Acceptable for credit: CSU/UC

Study and development of skills and technique in African Haitian Dance: Music and rhythm identification rooted in the social, cultural and historical context of African and Caribbean dance; technical foundation based in Katherine Dunham technique.      1008.00

**DANCE 81**      **Haitian Dance II**      F14  
1 unit, 3 hours lab (GR or P/NP)

Further study and development of the skills and techniques of traditional Haitian dance: Body alignment, placement, cultural significance, musicality and movement quality.      1008.00

**DANCE 82**      **Haitian Dance III**      F14  
1 unit, 3 hours lab (GR or P/NP)

Intense study of the skills and techniques of Haitian dance of an advanced/intermediate level, with a specific focus on specific regions of Haiti.      1008.00

**DANCE 83**      **Haitian Dance IV**      F14  
1 unit, 3 hours lab (GR or P/NP)

Intense study and development of the skills and techniques of intermediate/advanced Haitian dance: Including body alignment, placement, singing while dancing, performance, with a focus on regional variations of Haitian dance from the Congo Nation as well as Social dances of Haiti.      1008.00

## COURSE ADDITIONS

<b>E/ET 228</b>	<p><b>Advanced Lighting Controls</b> 4 units, 2 hours lecture/3 hours lab (GR) <i>Prerequisite: E/ET 226</i></p> <p>Advanced Lighting Controls with specific application in lighting industry and efficiency: Automatic controls, switches and dimmers, sensors and LED lighting sources, outdoors lighting, Daylighting and energy efficiency for commercial buildings, and use of data to apply the Title 24 requirements, for Acceptance Test Technician qualifications. 0934.40</p>	F14
<b>E/ET 229</b>	<p><b>PLC (Programmable Logic Controllers)</b> 3 units, 2 hours lecture/3 hours lab (GR) <i>Prerequisite: 203, 221</i></p> <p>Basic operating principles of the modern PLC (Programmable Logic Controllers): Operation, usage, instruction, applications, hardware, 0934.40</p>	S15
<b>E/ET 230</b>	<p><b>Acceptance Test Technician Certification</b> 1.5 units, 1 hour lecture/1.5 hours lab (GR or P/NP) <i>Prerequisite: E/ET 203, 214A, 218, 226</i></p> <p>Lighting Technology and California Building Energy Efficiency Standards: Occupant-sensing lighting controls, automatic daylighting controls, demand response controls, and outdoor lighting. Students obtain a certificate by passing the written exam and hands-on/lab exam. 0934.40</p>	S15
<b>ECT 101</b>	<p><b>Fundamentals of Building Science</b> 3 units, 3 hours lecture (GR) <i>Prerequisite: MATH 201</i></p> <p>Principles of physics relevant to building's indoor environment and its control: Thermodynamics, fluid mechanics, refrigeration cycles, electricity and energy conversion, and properties of light. Emphasis will be on the basic principles of physics and their application to building and their environmental control. 0946.00</p>	S15
<b>ESL 206</b>	<p><b>Spelling 3: Spelling and the Dictionary</b> 4 units, 4 hours lecture (GR or P/NP) <i>Prerequisite: ESL 256B</i> Acceptable for credit: CSU, UC pending</p> <p>Study of the spelling of American English: Focus upon dictionary skills. 4930.87</p>	S15
<b>ETHST 12</b>	<p><b>Economics and Social Change: Racial Conflict and Class in America</b> 3 units, 3 hours lecture (GR or P/NP) Acceptable for credit: CSU, UC pending</p> <p>Historical examination of the experiences of African-American, Asian-American, Spanish-Speaking, and other minorities working in the 20<sup>th</sup> century, with special attention to union organizing. 2203.00</p>	F14

## COURSE ADDITIONS

<b>ETHST 13</b>	<p><b>Introduction to Community Based Research in Urban America</b>            3 units, 3 hours lecture (GR or P/NP)            Acceptable for credit: CSU, UC pending</p> <p>Basic principles of community development: Models of successful community practice and how to create social capital. Case study methods will be used to explore resource mapping, problem assessment, and strategies for funding community based organizations. 2203.00</p>	F14
<b>ETHST 14</b>	<p><b>Community Building and Transformation in Urban America</b>            3 units, 3 hours lecture (GR or P/NP)            Acceptable for credit: CSU, UC pending</p> <p>Community organizing as a practice in areas of public service, non-profit work, and electoral politics: Political economy of community development through historical study of disenfranchised ethnic, racial, gendered and immigrant groups in the groups in the U.S. 2203.00</p>	F14
<b>HIST 3B</b>	<p><b>Modern World History: 1500-Present</b>            3 units, 3 hours lecture (GR or P/NP)            Acceptable for credit: CSU/UC</p> <p>Survey of world history since 1500: Developments of the modern world as shaped by social, economic, political, philosophical, and historic forces. 2205.00</p>	F13
<b>KIN 2</b>	<p><b>Lap Swimming</b>            0.5 unit, 2 hours lab (GR or P/NP)            Acceptable for credit: CSU/UC</p> <p>Activity class: Progressive workouts and instruction in lap swimming using the four competitive swim strokes; emphasis on developing cardiovascular fitness; increased distance and speed; exposure to aquatic sports. 0835.00</p>	F13
<b>KIN 4</b>	<p><b>Swimming for Fitness</b>            0.5 unit, 2 hours lab (GR or P/NP)            Acceptable for credit: CSU/UC</p> <p>Development of cardiovascular fitness and strength through swimming and aquatic skills to enhance personal fitness levels. 0835.00</p>	F13
<b>KIN 14B</b>	<p><b>Water Polo II—Beginning</b>            0.5 units, 2 hours lab (GR or P/NP)            Acceptable for credit: CSU/UC</p> <p>Activity class: Beginning principles and fundamentals in badminton. 0835.00</p>	F13
<b>KIN 14C</b>	<p><b>Water Polo III--Intermediate</b>            0.5 unit, 2 hours lab (GR or P/NP)            Acceptable for credit: CSU/UC</p>	F13

## COURSE ADDITIONS

Activity class: Development of intermediate water polo skills; including passing, shooting, and other playing skills. Includes game strategy and rules. 0835.00

**KIN 19A Aquatic Exercise I—Fundamentals** S15  
0.5 unit, 2 hours lab (GR or P/NP)  
Acceptable for credit: CSU/UC pending

Activity class: Development of personal fitness with a focus on cardiovascular and muscular fitness through various fundamental vertical aquatic movement exercises utilizing the low impact environment of the pool. 0835.00

**KIN 19B Aquatic Exercise II—Beginning** S15  
0.5 unit, 2 hours lab (GR or P/NP)  
Acceptable for credit: CSU/UC pending

Activity class: Development of personal fitness with a focus on cardiovascular and muscular fitness through various beginning vertical aquatic movement exercises, speed progressions and exercises utilizing the low impact environment of the pool. 0835.00

**KIN 47B Stationary Cycling II--Beginning** S14  
0.5 units, 2 hours lab (GR or P/NP)  
Acceptable for credit: CSU/UC

Activity class: Development of cardiovascular fitness: Stationary bicycle pedaling at various speeds and resistances, simulating hill climbing, racing, and other cycling situations. Moderate cardiovascular workout. 0835.00

**KIN 47C Stationary Cycling III--Intermediate** S14  
0.5 units, 2 hours lab (GR or P/NP)  
Acceptable for credit: CSU/UC

Activity class: Development of cardiovascular fitness: Stationary bicycle pedaling at various speeds and resistances, simulating hill climbing, racing, and other cycling situations. Intermediate cardiovascular workout. 0835.00

**KIN 51B Yoga II--Beginning** S14  
0.5 units, 2 hours lab (GR or P/NP)  
Acceptable for credit: CSU/UC

Activity class: Development of beginning yoga stretches, postures, and relaxation techniques. Increased use of conscious breathing patterns. 0835.00

**KIN 51C Yoga III--Intermediate** S15  
0.5 units, 2 hours lab (GR or P/NP)  
Acceptable for credit: CSU/UC pending

Activity class: Development of intermediate yoga stretches, postures, core strengthening, relaxation techniques, and personal practice. 0835.00





## COURSE ADDITIONS

	Activity class: Competitive strategies and skills in badminton.	0835.00	
<b>KIN 76A</b>	<b>Baseball I—Fundamentals</b> 0.5 units, 2 hours lab (GR or P/NP) Acceptable for credit: CSU/UC		F13
	Activity class: Fundamentals and skills in baseball.	0835.00	
<b>KIN 76B</b>	<b>Baseball II—Beginning</b> 1 unit, 4 hours lab (GR or P/NP) Acceptable for credit: CSU/UC		F13
	Activity class: Beginning level development of baseball skills.	0835.00	
<b>KIN 80B</b>	<b>Basketball II—Beginning</b> 0.5 units, 2 hours lab (GR or P/NP) Acceptable for credit: CSU/UC		F13
	Activity Class: Beginning level of basketball rules and skills, introductory concepts of offense and defense.	0835.00	
<b>KIN 80C</b>	<b>Basketball III—Intermediate</b> 0.5 units, 2 hours lab (GR or P/NP) Acceptable for credit: CSU/UC		S14
	Activity class: Intermediate introduction of basketball fundamentals, introductory concepts of offense and defense.	0835.00	
<b>KIN 80D</b>	<b>Basketball IV—Competitive</b> 0.5 units, 2 hours lab (GR or P/NP) Acceptable for credit: CSU/UC		S14
	Activity Class: Introduction to competitive level basketball techniques through practice drills.	0835.00	
<b>KIN 89A</b>	<b>Football - Offensive I –Fundamentals</b> 1 unit, 4 hours lab (GR or P/NP) Acceptable for credit: CSU/UC		S14
	Activity class: Current concepts of offense are examined using game footage, practices, and computer assisted analysis.	0835.00	
<b>KIN 89B</b>	<b>Football - Offensive II –Beginning</b> 1 unit, 4 hours lab (GR or P/NP) Acceptable for credit: CSU/UC		S14
	Activity class: Current concepts of offense are examined using game footage, practices, and		

## COURSE ADDITIONS

computer assisted analysis. Concepts are examined and applied to attack opponent's offensive strategies. Strategy, techniques, game rules, developmental drills, strength and conditioning programs are covered. 0835.00

<b>KIN 90A</b>	<b>Football – Defensive I—Fundamentals</b> 1 unit, 4 hours lab (GR or P/NP) Acceptable for credit: CSU/UC	S14
	Activity class: Current concepts of defense are examined using game footage, practice, and computer assisted analysis. 0835.00	
<b>KIN 90B</b>	<b>Football – Defensive II—Beginning</b> 1 unit, 4 hours lab (GR or P/NP) Acceptable for credit: CSU/UC	S14
	Activity class: Current concepts of defense are examined using game footage, practice, and computer assisted analysis. Concepts are examined and applied to attack opponent's defensive strategies. Strategy, techniques, game rules, development drills, strength and conditioning programs are covered. 0835.00	
<b>KIN 93</b>	<b>Football Fundamentals I</b> 2 unit, 2 hours lecture (GR or P/NP) Acceptable for credit: CSU/UC	S14
	Basic introduction to the knowledge of strategy, rules, and principles of team play in football. 0835.00	
<b>KIN 94</b>	<b>Football Fundamentals II</b> 2 unit, 2 hours lecture (GR or P/NP) Acceptable for credit: CSU/UC	S14
	Advanced knowledge of strategy, rules, and principles of team play in competition football. 0835.00	
<b>KIN 95</b>	<b>Football Theory and Practice I</b> 2 unit, 2 hours lecture (GR or P/NP) Acceptable for credit: CSU/UC	S14
	Basic theory and techniques through lecture and practice drills. 0835.00	
<b>KIN 96</b>	<b>Football Theory and Practice II</b> 2 unit, 2 hours lecture (GR or P/NP) Acceptable for credit: CSU/UC	S14
	Advanced theory and techniques through lecture, practice drills, and game situations. 0835.00	
<b>KIN 107B</b>	<b>Tennis II—Beginning</b> 0.5 units, 2 hours lab (GR or P/NP)	F13

## COURSE ADDITIONS

	Acceptable for credit: CSU/UC	
	Activity Class: Fundamentals and Beginning Skills in Tennis.	0835.00
<b>KIN 110A</b>	<b>Track and Field I--Fundamentals</b> 0.5 units, 2 hours lab (GR or P/NP) Acceptable for credit: CSU/UC	S14
	Activity class: Fundamentals and skills in track and field.	0835.00
<b>KIN 111B</b>	<b>Aerobics of Jogging II--Beginning</b> 0.5 units, 2 hours lab (GR or P/NP) Acceptable for credit: CSU/UC	F13
	Activity class: Development of cardiovascular and respiratory systems of the body through oxygen intake; increased tolerance for jogging/running.	0835.00
<b>KIN 120B</b>	<b>Volleyball II--Beginning</b> 0.5 units, 2 hours lab (GR or P/NP) Acceptable for credit: CSU/UC	F13
	Activity class: Beginning level of volleyball rules and skills, introductory concepts of offense and defense.	0835.00
<b>KIN 134</b>	<b>Care and Prevention of Athletic Injuries</b> 3 units, 3 hours lecture (GR or P/NP) Acceptable for credit: CSU/UC	F13
	Care and prevention of athletic injuries: Techniques for preventing, identifying, and treating injuries commonly associated with athletics.	0835.00
<b>MEDIA 102A</b>	<b>Broadcast Journalism A</b> 3 units, 3 hours lecture (GR or P/NP) Acceptable for credit: CSU/UC	S15
	Study of television and digital news production: Research and practice in the creative writing, reporting and production of current news.	0604.20
<b>MEDIA 102B</b>	<b>Broadcast Journalism B</b> 3 units, 3 hours lecture (GR or P/NP) Acceptable for credit: CSU/UC	S15
	Continuation of Media 102A, with emphasis in writing and performance of news stories.	0604.20
<b>MEDIA 181</b>	<b>Digital Cinema Production in 4K</b> 3 units, 3 hours lecture (GR or P/NP) <i>Prerequisite: MEDIA 104</i> <i>Recommended preparation: MEDIA 180; 120; 121; MUSIC 122</i> Acceptable for credit: CSU	S15
	Advanced digital cinema techniques in 4K production and postproduction workflows;	

## COURSE ADDITIONS

Emphasis on the use of the Scarlet-X camera from Red Digital Cinema, use of other cameras in 4K mode. 0604.20

<b>MUSIC 100</b>	<p><b>Music Fundamentals</b></p> <p>3 units, 2 hours lecture/3 hours lab (GR or P/NP) Acceptable for credit: CSU, UC</p> <p>Introduction to the notation and primary elements of tonal music: Staff notation in treble and bass clefs, rhythm and meter; basic properties of sound; intervals; diatonic scales and triads; and diatonic chords. Development of skills in handwritten notation is expected. 1004.00</p>	M14
<b>MUSIC 101</b>	<p><b>Music Theory I</b></p> <p>3 units, 3 hours lecture (GR or P/NP) <i>Recommended concurrent enrollment in MUSIC 121, MUSIC 138-141, MUSIC 142-145, or MUSIC 146-149</i> Acceptable for credit: CSU, UC pending</p> <p>Composition and analysis of music: Rhythm and meter; basic properties of sound; intervals; diatonic scales and triads; diatonic chords, basic cadential formulas and phrase structure; dominant seventh; figured bass symbols; and non-harmonic tones. Development of skills in handwritten notation is expected. 1004.00</p>	F14
<b>MUSIC 102</b>	<p><b>Music Theory II</b></p> <p>3 units, 3 hours lecture (GR or P/NP) <i>Recommended preparation: MUSIC 101 and 121</i> <i>Recommended concurrent enrollment in MUSIC 122, MUSIC 138-141, MUSIC 142-145, or MUSIC 146-149</i> Acceptable for credit: CSU, UC pending</p> <p>Continuation of Music 101: Composition and analysis of music: Introduction to two-part counterpoint; voice leading involving four-part chorale writing; diatonic harmony; and an introduction to secondary/applied chords and modulation. 1004.00</p>	F14
<b>MUSIC 103</b>	<p><b>Music Theory III</b></p> <p>3 units, 3 hours lecture (GR or P/NP) <i>Recommended preparation: MUSIC 102 and 122</i> <i>Recommended concurrent enrollment in MUSIC 123, MUSIC 138-141, MUSIC 142-145, or MUSIC 146-149</i> Acceptable for credit: CSU, UC pending</p> <p>Continuation of Music 102: Composition and analysis of music: Chromatic harmony; secondary/applied chords; modulation; borrowed chords; introduction to Neapolitan and augmented-sixth chords. 1004.00</p>	F14
<b>MUSIC 104</b>	<p><b>Music Theory IV</b></p> <p>3 units, 3 hours lecture (GR or P/NP) <i>Recommended preparation: MUSIC 103 and 123</i> <i>Recommended concurrent enrollment in MUSIC 124, MUSIC 138-141, MUSIC 142-145, or MUSIC 146-149</i> Acceptable for credit: CSU, UC pending</p>	F14

## COURSE ADDITIONS

Continuation of Music 103: Composition and analysis; post-Romantic techniques such as borrowed chords and modal mixture, chromatic mediants, Neapolitan and augmented-sixth chords, 9<sup>th</sup>, 11<sup>th</sup> and 13<sup>th</sup> chords, altered chords and dominants; and 20<sup>th</sup> century techniques such as: Impressionism, tone rows, set theory, pandiatonicism and polytonalism, meter and rhythm. 1004.00

**MUSIC 105**      **Classic Guitar I**      F13  
1 unit, 1 hour lecture/2 hours lab (GR or P/NP)  
Acceptable for credit: CSU, UC

Individualized instruction for level I acoustical guitar: Classical finger style techniques, reading music, basic chord symbols, strums, and simple song accompaniments. Performance evaluation by music faculty. 1004.00

**MUSIC 106**      **Classic Guitar II**      F13  
1 unit, 1 hour lecture/2 hours lab (GR or P/NP)  
*Recommended preparation: MUSIC 105*  
Acceptable for credit: CSU, UC

Individualized instruction for level II acoustical guitar: Classical finger style techniques, reading music, basic chord symbols, strums, and simple song accompaniments. Performance evaluation by music faculty. 1004.00

**MUSIC 107**      **Classic Guitar III**      F13  
1 unit, 1 hour lecture/2 hours lab (GR or P/NP)  
*Recommended preparation: MUSIC 106*  
Acceptable for credit: CSU, UC

Individualized instruction for level III acoustical guitar: Classical finger style techniques, reading music, basic chord symbols, strums, and simple song accompaniments. Performance evaluation by music faculty. 1004.00

**MUSIC 108**      **Classic Guitar IV**      F13  
1 unit, 1 hour lecture/2 hours lab (GR or P/NP)  
*Recommended preparation: MUSIC 107*  
Acceptable for credit: CSU, UC

Individualized instruction for level IV acoustical guitar: Classical finger style techniques, reading music, basic chord symbols, strums, and simple song accompaniments. Performance evaluation by music faculty. 1004.00

**MUSIC 109**      **Beginning Winds I**      S14  
1 unit, 1 hour lecture/2 hours lab (GR or P/NP)  
Acceptable for credit: CSU, UC

Individualized instruction for level I Woodwind technique and theory: Instrument assembly, breath support, instrument position, embouchure, tone production, articulation, and lip slurs; progressive development of skills needed for solo performance. 1004.00

**MUSIC 110**      **Beginning Winds II**      F13

## COURSE ADDITIONS

1 unit, 1 hour lecture/2 hours lab (GR or P/NP)

*Prerequisite: MUSIC 109*

Acceptable for credit: CSU, UC

Individualized instruction for level II Woodwind technique and theory: Balance and blending, basic improvisation, tone production, embouchure, instrument position, and basic woodwind technique; progressive development of skills needed for solo performance. 1004.00

**MUSIC 111      **Beginning Winds III**      F13**

1 unit, 1 hour lecture/2 hours lab (GR or P/NP)

*Recommended preparation: MUSIC 110*

Acceptable for credit: CSU, UC

Individualized instruction for level III Woodwind technique and theory: Efficient practice strategies, introduction to pedagogy, performance issues, instrumental technique; emphasis on the progressive development of skills needed for solo performance. 1004.00

**MUSIC 112      **Beginning Winds IV**      S14**

1 unit, 1 hour lecture/2 hours lab (GR or P/NP)

*Recommended preparation: MUSIC 111*

Acceptable for credit: CSU, UC

Individualized instruction for level IV Woodwind technique and theory: Doubling, performance issues, pedagogy, solo repertoire; emphasis on the progressive development of skills needed for solo performance. 1004.00

**MUSIC 113      **Beginning Percussion I**      S14**

1 unit, 1 hour lecture/2 hours lab (GR or P/NP)

Acceptable for credit: CSU, UC

Individualized instruction for level I percussion techniques and theory: Rhythmic notation, fundamentals of snare performance, fundamentals of 3-line notational instruments, introduction to keyboard-percussion instruments, introduction to orchestral percussion; progressive development of skills needed for solo performance. Achievement is evaluated through a juried performance. 1004.00

**MUSIC 114      **Beginning Percussion II**      S14**

1 unit, 1 hour lecture/2 hours lab (GR or P/NP)

*Recommended preparation: MUSIC 113*

Acceptable for credit: CSU, UC

Individualized instruction for level II percussion techniques and theory: Basic hand technique, foot technique, reading percussion notation, improvisation, and introduction to World Music drumming styles; progressive development of skills needed for solo performance. 1004.00

**MUSIC 115      **Beginning Percussion III**      S14**

1 unit, 1 hour lecture/2 hours lab (GR or P/NP)

*Recommended preparation: MUSIC 114*

Acceptable for credit: CSU, UC

Individualized instruction for level III percussion techniques and theory: Advanced level solos

## COURSE ADDITIONS

for snare drum, and keyboard-mallet percussion instruments meter precision and rhythmic skills, advanced techniques for performing hand percussion instruments, rhythmic accompanying; progressive development of skills needed for solo performance. 1004.00

- MUSIC 116**      **Beginning Percussion IV**      M14  
 1 unit, 1 hour lecture/2 hours lab (GR or P/NP)  
*Recommended preparation: MUSIC 115*  
 Acceptable for credit: CSU, UC
- Individualized instruction for level IV percussion techniques and theory: Odd meters, Brazilian, Cuban, Caribbean, brush technique; progressive development of skills needed for solo performance. 1004.00
- MUSIC 117**      **Voice I**      F13  
 1 unit, 1 hour lecture/2 hours lab (GR or P/NP)  
 Acceptable for credit: CSU, UC
- Individualized instruction for beginning vocal techniques and theory: Posture, breathing, phonation, resonance, and preparation of lyrics; progressive development of skills needed for solo performance. Achievement is evaluated through a juried performance. 1004.00
- MUSIC 118**      **Voice II**      F13  
 1 unit, 1 hour lecture/2 hours lab (GR or P/NP)  
*Recommended preparation: MUSIC 117*  
 Acceptable for credit: CSU, UC
- Individualized instruction for level II vocal techniques and theory: Postures other than standing, vowel color, vocal range, intonation, and changes of register; progressive development of skills needed for solo performance. Achievement is evaluated through a juried performance. 1004.00
- MUSIC 119**      **Voice III**      F13  
 1 unit, 1 hour lecture/2 hours lab (GR or P/NP)  
*Recommended preparation: MUSIC 118*  
 Acceptable for credit: CSU, UC
- Individualized instruction for level III vocal techniques and theory: Anatomy of registers and pitch, consonants, pharyngeal adjustment, vibrato, and special registers in women and men; progressive development of skills needed for solo performance. Achievement is evaluated through a juried performance. 1004.00
- MUSIC 120**      **Voice IV**      F13  
 1 unit, 1 hour lecture/2 hours lab (GR or P/NP)  
*Recommended preparation: MUSIC 122*  
 Acceptable for credit: CSU, UC
- Individualized instruction for level IV vocal techniques and theory: Vocal initiation and glottal tension, vowel placement, preparing songs in German and French, voice classification, and ensemble singing; progressive development of skills needed for solo performance. Achievement is evaluated through a juried performance. 1004.00



## COURSE ADDITIONS

<b>MUSIC 121</b>	<p><b>Musicianship I</b>            1 unit, 4 hours lab (GR or P/NP)  <i>Recommended concurrent enrollment in MUSIC 101, MUSIC 138-141, MUSIC 142-145, or MUSIC 146-149</i>            Acceptable for credit: CSU, UC pending</p> <p>Application and development of rhythmic, melodic, and harmonic materials of Music Theory I: Ear training, sight singing, analysis, and dictation. 1004.00</p>	F14
<b>MUSIC 122</b>	<p><b>Musicianship II</b>            1 unit, 4 hours lab (GR or P/NP)  <i>Recommended preparation: MUSIC 101 and 121</i>  <i>Recommended concurrent enrollment in MUSIC 102, MUSIC 138-141, MUSIC 142-145, or MUSIC 146-149</i>            Acceptable for credit: CSU, UC pending</p> <p>Continuation of Music 121: Application and development of rhythmic, melodic, and harmonic materials of Music Theory II; ear training, sight singing, analysis, and dictation. 1004.00</p>	F14
<b>MUSIC 123</b>	<p><b>Musicianship III</b>            1 unit, 4 hours lab (GR or P/NP)  <i>Recommended preparation: MUSIC 102 and 122</i>  <i>Recommended concurrent enrollment in MUSIC 103, MUSIC 138-141, MUSIC 142-145, or MUSIC 146-149</i>            Acceptable for credit: CSU, UC pending</p> <p>Continuation of Music 122: Application and development of rhythmic, melodic, and harmonic materials of Music Theory III; ear training, sight singing, analysis, and dictation. 1004.00</p>	F14
<b>MUSIC 124</b>	<p><b>Musicianship IV</b>            1 unit, 4 hours lab (GR or P/NP)  <i>Recommended preparation: MUSIC 103 and 123</i>  <i>Recommended concurrent enrollment in MUSIC 104, MUSIC 138-141, MUSIC 142-145, or MUSIC 146-149</i>            Acceptable for credit: CSU, UC pending</p> <p>Continuation of Music 123: Application and development of rhythmic, melodic, and harmonic materials of Music Theory IV; ear training, sight singing, analysis, and dictation. 1004.00</p>	F14
<b>MUSIC 125</b>	<p><b>Chorus</b>            1 unit, 4 hours lab (GR or P/NP)            Acceptable for credit: CSU, UC pending</p> <p>Study and interpretation of a wide variety of accompanied and unaccompanied choral literature. Participation in public performance is required. 1004.00</p>	F14
<b>MUSIC 126</b>	<p><b>Jazz Orchestra</b>            1 unit, 4 hours lab (GR or P/NP)            Acceptable for credit: CSU, UC pending</p>	F14

## COURSE ADDITIONS

	Study and performance of Jazz Orchestra literature. Participation in public performance required.	1004.00
<b>MUSIC 127</b>	<b>Jazz Combos</b> 1 unit, 4 hours lab (GR or P/NP) Acceptable for credit: CSU, UC pending	F14
	Study and performance of Jazz literature and arrangements: Designed for jazz-oriented instrumentalists interested in performing in small jazz ensembles.	1004.00
<b>MUSIC 128</b>	<b>Choral Repertoire</b> 1 unit, 4 hours lab (GR or P/NP) Acceptable for credit: CSU, UC pending	S15
	Study and performance of advanced choral literature.	1004.00
<b>MUSIC 129</b>	<b>Jazz Orchestra Repertoire</b> 1 unit, 4 hours lab (GR or P/NP) Acceptable for credit: CSU, UC pending	S15
	Performance in and management of the Jazz Orchestra for the advanced instrumental student: Study and analysis of advanced repertoire, conducting and rehearsal techniques, literature selection, and organizing public performances.	1004.00
<b>MUSIC 130</b>	<b>Elementary Piano Method I</b> 1 unit, 1 hour lecture/2 hours lab (GR or P/NP) Acceptable for credit: CSU, UC	F13
	Individualized study of level I beginning piano techniques and theory: Five-finger technique in C Major and D Minor, elementary rhythm, legato, staccato, coordination of both hands, beginning theory related to keyboard music, progressive development of skills needed for solo performance. Performance evaluation by music faculty.	1004.00
<b>MUSIC 131</b>	<b>Elementary Piano Method II</b> 1 unit, 1 hour lecture/2 hours lab (GR or P/NP) <i>Recommended preparation: MUSIC 130</i> Acceptable for credit: CSU, UC	F13
	Individualized study of level II beginning piano techniques and theory: Five-finger technique in G Major, F Major and E Minor extending to a sixth, finger crossing and chord playing, use of damper pedal, meters with half note and eighth note beats, beginning theory related to level II keyboard music, progressive development of skills needed for solo performance. Performance evaluation by music faculty.	1004.00
<b>MUSIC 132</b>	<b>Elementary Piano Method III</b> 1 unit, 1 hour lecture/2 hours lab (GR or P/NP) <i>Recommended preparation: MUSIC 131</i> Acceptable for credit: CSU, UC	F13
	Individualized study of level III beginning piano techniques and theory: Scale playing and	

## COURSE ADDITIONS

performance in C, G, F, D Major, level III finger technique including intervals of the seventh and octave, techniques for changing positions, recognition and performance of primary triads and seventh chords, progressive development of skills needed for solo performance. Performance evaluation by music faculty.

1004.00

**MUSIC 133****Elementary Piano Method IV**

F13

1 unit, 1 hour lecture/2 hours lab (GR or P/NP)

*Recommended preparation: MUSIC 132*

Acceptable for credit: CSU, UC

Individualized study of level IV beginning piano techniques and theory: Scale playing, reading of notation, and performance in Bb and A Major; A, E, B, D, and G Minor; introduction to chromaticism, diminished, and augmented triads; reading and performance of rhythms including sixteenth notes and triplets; Music History relating to keyboard music; progressive development of skills needed for solo performance. Performance evaluation by music faculty.

1004.00

**MUSIC 134****Intermediate Piano Literature I**

F13

1 unit, 1 hour lecture/2 hours lab (GR or P/NP)

Acceptable for credit: CSU, UC

Individualized study of level I intermediate piano literature, techniques, and theory: All major scales, keyboard history of Renaissance and Baroque Eras; level I intermediate rhythms, including syncopation, simple and compound meters, sixteenth notes, and triplets; playing duets; progressive development of skills needed for solo performance. Performance evaluation by music faculty.

1004.00

**MUSIC 135****Intermediate Piano Literature II**

F13

1 unit, 1 hour lecture/2 hours lab (GR or P/NP)

*Recommended preparation: MUSIC 134*

Acceptable for credit: CSU, UC

Individualized study of level II intermediate piano literature, techniques, and theory: All harmonic scales, keyboard history pertaining to the Classical Era; triad inversions, and seventh chords; cadences and basic chord progressions; duets; progressive development of skills needed for solo performance. Performance evaluation by music faculty.

1004.00

**MUSIC 136****Intermediate Piano Literature III**

F13

1 unit, 1 hour lecture/2 hours lab (GR or P/NP)

*Recommended preparation: MUSIC 135*

Acceptable for credit: CSU, UC

Individualized study of level III intermediate piano literature, techniques, and theory: All melodic minor scales, keyboard history pertaining to the Romantic Era; ornamentation; interpretation and execution of triplets; duets; progressive development of skills needed for solo performance. Performance evaluation by music faculty.

1004.00

**MUSIC 137****Intermediate Piano Literature IV**

F13

## COURSE ADDITIONS

1 unit, 1 hour lecture/2 hours lab (GR or P/NP)

*Recommended preparation: MUSIC 136*

Acceptable for credit: CSU, UC

Individualized study of level IV intermediate piano literature, techniques, and theory: Chromatic, octatonic, and whole-tone scales; Twentieth Century piano literature; piano voicing; interpretation and execution odd and changing meter; duets; progressive development of skills needed for solo performance. Performance evaluation by music faculty.

1004.00

**MUSIC 138****Jazz Piano I**

F13

1 unit, 1 hour lecture/2 hours lab (GR or P/NP)

*Recommended preparation: MUSIC 133*

Acceptable for credit: CSU, UC

Individualized study of level I jazz piano literature, techniques, and theory: Overview of jazz piano styles, beginning approaches to comping, major 7, dominant 7, and minor 7 chords as well as 3-note voicings, introduction to improvisation-the blues scale, class performance; progressive development of skills needed for solo performance. Performance evaluation by music faculty.

1004.00

**MUSIC 139****Jazz Piano II**

F13

1 unit, 1 hour lecture/2 hours lab (GR or P/NP)

*Recommended preparation: MUSIC 138*

Acceptable for credit: CSU, UC

Individualized study of level II jazz piano literature, techniques, and theory: Mixolydian and dorian scales, overview of jazz piano styles from 1925 to 1940, intermediate comping, basic jazz theory including 9<sup>th</sup> chords and 4-note voicings, improvisation on simple chord progressions; class performance; progressive development of skills needed for solo performance. Performance evaluation by music faculty.

1004.00

**MUSIC 140****Jazz Piano III**

F13

1 unit, 1 hour lecture/2 hours lab (GR or P/NP)

*Recommended preparation: MUSIC 139*

Acceptable for credit: CSU, UC

Individualized study of level III jazz piano literature, techniques, and theory: Phrygian dominant scales, overview of jazz piano styles from 1940 to 1960, advanced approaches to comping, jazz theory including minor ii-V-I's, improvisation on standard jazz songs, class performance; progressive development of skills needed for solo performance. Performance evaluation by music faculty.

1004.00

**MUSIC 141****Jazz Piano IV**

F13

1 unit, 1 hour lecture/2 hours lab (GR or P/NP)

*Recommended preparation: MUSIC 141*

Acceptable for credit: CSU, UC

Individualized study of level IV jazz piano literature, techniques, and theory: Altered and

## COURSE ADDITIONS

Lydian dominant scales; Jazz piano styles from 1960 to the present; advanced approaches to comping-group interaction, melodic minor harmony; two-hand voicing's improvisation on standard jazz songs, class performance; progressive development of skills needed for solo performance. Performance evaluation by music faculty.

1004.00

**MUSIC 142 Instrumental Ensemble S15**

1 unit, 4 hours lab (GR or P/NP)

*Prerequisite: Ability to read and perform the standard chamber music repertoire on a brass, percussion, string, or woodwind instrument as determined by the instructor.*

Acceptable for credit: CSU, UC pending

Study of instrumental ensemble literature: Ensemble playing devoted to the performance of small chamber works for brass, percussion, strings, and woodwind instruments. 1004.00

**MUSIC 143 String Ensemble S15**

1 unit, 4 hours lab (GR or P/NP)

*Other preparation: Ability to play string instruments proficiently as determined by the instructor.*

Acceptable for credit: CSU, UC pending

Study and performance of string and chamber literature: Designed for string players interested in performing the standard repertoire of string quartets and other small chamber ensembles. 1004.00

**MUSIC 144 Intermediate Jazz Combos S15**

1 unit, 4 hours lab (GR or P/NP)

*Prerequisite: Ability to play a jazz-oriented instrument proficiently and some knowledge of improvisation as determined by instructor.*

Acceptable for credit: CSU, UC pending

Study and performance of intermediate Jazz literature and arrangements: Designed for jazz-oriented instrumentalists interested in performing in small jazz ensembles. 1004.00

**MUSIC 145 Advanced Jazz Combos S15**

1 unit, 4 hours lab (GR or P/NP)

*Prerequisite: Ability to play a jazz-oriented instrument proficiently and some knowledge of improvisation as determined by instructor.*

Acceptable for credit: CSU, UC pending

Advanced study and performance of Jazz literature and arrangements: Designed for jazz-oriented instrumentalists interested in performing in small jazz ensembles. 1004.00

**MUSIC 225 Choral Repertoire S15**

1 unit, 4 hours lab (GR or P/NP)

Advanced level study and interpretation of accompanied and unaccompanied choral literature. Participation in public performance required. 1004.00

**MUSIC 226 Jazz Orchestra Repertoire S15**

## COURSE ADDITIONS

1 unit, 4 hours lab (GR or P/NP)

Performance in and management of the Jazz Orchestra for the advanced instrumental student: Conducting and rehearsal techniques, literature selection, and organizing public performances. 1004.00

<b>PHIL 4</b>	<b>Philosophy of Religion</b> 3 units, 3 hours lecture (GR or P/NP) Acceptable for credit: CSU/UC  Philosophy of religion from both an existential and historical perspective: Existentially, through an examination of "religion" as a personal, social and theological; and historically, through an examination of common doctrines in the Semitic, Vedic and East Asian religions. 1004.00	S15
<b>PSYCH 21</b>	<b>Lifespan Human Development</b> 3 units, 3 hours lecture (GR) Acceptable for credit: CSU/UC  Human development from conception to death: Theories of development, research methods; physical, cognitive, social, and emotional changes of the time span with developmental issues; nature vs. nurture, continuity vs. discontinuity, stability vs. instability. 2001.00	S15
<b>PSYCH 28</b>	<b>Introduction to Research Methods in Psychology</b> 3 units, 3 hours lecture (GR) Acceptable for credit: CSU/UC  Introduction to research methods for psychology: Research design; experimental procedures; descriptive methods; instrumentation; collection, analysis, and reporting of research data; review of research design and methodology in various subdisciplines of psychology. 2001.00	S15
<b>SPAN 48GA</b>	<b>Introduction to Nahuatl (Aztec) Language and Culture</b> 5 units, 5 hours lecture (GR or P/NP) Acceptable for credit: CSU  Development and application of language skills and cultural exploration of the Nahuatl (Aztec) speaking world: Study and practice in understanding, speaking, reading and writing Nahuatl (Aztec); readings in contemporary and old Mexican (Nahuatl) culture. 1105.00	F14
<b>SPAN 48GB</b>	<b>Introduction to Nahuatl (Aztec) Language and Culture (cont.)</b> 5 units, 5 hours lecture (GR or P/NP)  Continuation of 48A: Development and application of language skills and cultural exploration of the Nahuatl (Aztec) speaking world: Study and practice in understanding, speaking, reading and writing Nahuatl (Aztec); readings in contemporary and old Mexican (Nahuatl) culture. 1105.00	F14
<b>SPFT 33</b>	<b>Aerobics</b> 0.5 units, 2 hours lab (GR or P/NP) Acceptable for credit: CSU, UC  Activity class: Development of personal fitness with a focus on cardiovascular and respiratory	M14

## COURSE ADDITIONS

fitness through various group exercise activities.

Not open for credit to students who have completed or are currently enrolled in KIN 33.

0835.00

**SPFT 34 Step Aerobics** M14

0.5 units, 2 hours lab (GR or P/NP)

Acceptable for credit: CSU, UC

Activity class: Development of personal fitness using a step platform and step combinations that focus on developing the cardiovascular system.

Not open for credit to students who have completed or are currently enrolled in KIN 34.

0835.00

**SPFT 36 Aerobic Circuits** M14

0.5 units, 2 hours lab (GR or P/NP)

Acceptable for credit: CSU, UC

Activity class: Development of personal fitness with an emphasis on the cardiovascular, muscular and respiratory systems through a variety of exercise activities.

Not open for credit to students who have completed or are currently enrolled in KIN 36.

0835.00

**SPFT 54D Cross Fitness IV--Experienced** M14

1 unit, 3 hours lab (GR or P/NP)

Acceptable for credit: CSU, UC

Activity class: Experienced training that employs an advanced principle of resistive exercises which will improve lifetime fitness and overall body fitness with an emphasis on weights.

Not open for credit to students who have completed or are currently enrolled in KIN 54D.

0835.00

**SPFT 59A Strength Training for Sports I--Fundamentals** M14

0.5 units, 2 hours lab (GR or P/NP)

Acceptable for credit: CSU, UC

Activity class: Fundamental introduction to strength training for a specific sport.

Not open for credit to students who have completed or are currently enrolled in KIN 59A.

0835.00

**SPFT 59D Strength Training for Sports IV--Competitive** M14

0.5 units, 2 hours lab (GR or P/NP)

Acceptable for credit: CSU, UC

Activity class: Competitive level strength training for a specific sport.

Not open for credit to students who have completed or are currently enrolled in KIN 59D.

0835.00

**SPFT 86A Flag Football I--Fundamentals** M14

1 unit, 3 hours lab (GR or P/NP)

Acceptable for credit: CSU, UC

## COURSE ADDITIONS

Activity class: Basic introduction to flag football skills.

Not open for credit to students who have completed or are currently enrolled in KIN 86A.

0835.00

**SPFT 86B**      **Flag Football II--Beginning**      M14  
 1 unit, 3 hours lab (GR or P/NP)  
 Acceptable for credit: CSU, UC

Activity class: Fundamental instruction to flag football skills.

Not open for credit to students who have completed or are currently enrolled in KIN 86B.

0835.00

**SPFT 86D**      **Flag Football IV--Competitive**      M14  
 1 unit, 3 hours lab (GR or P/NP)  
 Acceptable for credit: CSU, UC

Activity class: Advanced level of competition in flag football development.

Not open for credit to students who have completed or are currently enrolled in KIN 86D.

0835.00

**THART 32**      **Rehearsal and Production II**      S15  
 3 units, 4 hours lab (GR)  
 Acceptable for credit: CSU/UC

Continuation of Theatre 31. More extensive practical and creative experience in the work and art of producing a performance for an audience at an intermediate level.      1007.00

**THART 33**      **Rehearsal and Production III**      S15  
 3 units, 4 hours lab (GR)  
 Acceptable for credit: CSU/UC

Continuation of Theatre 32. More extensive practical and creative experience in the work and art of producing a performance for an audience at an advanced level.      1007.00

**THART 34**      **Rehearsal and Production IV**      S15  
 3 units, 4 hours lab (GR)  
 Acceptable for credit: CSU/UC

Continuation of practical and creative experience in the work and art of producing a performance for an audience at a professional level.      1007.00

**WDTEC 211A**      **Basic Computerized Drafting Techniques**      F14  
 1 units, 0.5 hour lecture/1.5 hours lab (GR)

Basics of computerized drafting: Principles of applied geometry underlying orthographic and pictorial drawings, developing plans, elevations, sections and isometrics.

Not open for credit to students who have completed or are currently enrolled in ARCH 211A.

0953.00



COURSE ADDITIONS

<b>WELD 235A</b>	<b>Pipefitting Level I</b>	F13
	3 units, 2 hours lecture/3 hours lab (GR or P/NP)	
	Comprehensive overview of work, responsibilities, career opportunities, and safety principles associated with the pipefitting trade: Includes pipefitting hand tools and power tools, pipe cutting.	
		0956.50

COURSE CHANGES		
DEPT/NO.	CHANGE COURSE FROM:	CHANGE COURSE TO:
<b>AFRAM 12</b>	<b>Psychology of African-Americans</b>  Principles of psychology as they relate to the African-American community: Selected social problems such as prejudice and desegregation, racial conflict, and deviancy in the community from an African-American perspective.	<b>Psychology of African Americans</b>  Principles of psychology related to African-American racial identity: Examination of mental health services; coping strategies; African centered theories of black psychology; and the impact of race, class, and gender upon psychological states of being.
<b>ARCH 103</b>	<b>Materials of Construction</b>  Prerequisite: ARCH 013	<b>Materials of Construction</b>  No prerequisite
<b>ARCH 104A</b>	<b>Beginning Computer Aided Drafting (CAD)</b>  Prerequisite: ARCH 013	<b>Beginning Computer Aided Drafting (CAD)</b>  No prerequisite
<b>BUS 456A</b>	<b>Occupational Work Experience in Accounting</b>  No description	<b>Occupational Work Experience in Accounting</b>  Supervised employment providing opportunities to become a productive, responsible individual and to extend learning in a chosen occupational field.
<b>BUS 456C</b>	<b>Occupational Work Experience in Banking and Finance</b>  No description	<b>Occupational Work Experience in Banking and Finance</b>  Supervised employment of students extending classroom-based occupational learning at an on-the-job learning station relating to students' educational or occupational goals in the field of Banking and Finance.
<b>BUS 456I</b>	<b>Occupational Work Experience in Management and Supervision</b>  No description	<b>Occupational Work Experience in Management and Supervision</b>  Supervised employment providing opportunities to become a productive, responsible individual and to extend learning in a chosen occupational field.
<b>BUS 456J</b>	<b>Occupational Work Experience in Marketing and Sales</b>  No description	<b>Occupational Work Experience in Marketing and Sales</b>  Supervised employment providing opportunities to become a productive, responsible individual and to extend learning in a chosen occupational field.
<b>BUS 456Q</b>	<b>Occupational Work Experience in Administrative Office Systems and Applications</b>  No description	<b>Occupational Work Experience in Administrative Office Systems and Applications</b>  Supervised employment providing opportunities to become a productive, responsible individual and to extend learning in a chosen occupational field.
<b>CARP 206</b>	<b>Energy Efficiency and Weatherization</b>  Units: 3.0	<b>High Performance Building</b>  Units: 3.5
<b>CARP 211</b>	<b>Elements of Construction</b>	<b>Beginning Carpentry</b>
<b>CARP 220</b>	<b>Rough Framing</b>	<b>CARP 229 Rough Framing</b>

## COURSE CHANGES

	Units: 3.0	Units: 3.5
<b>CARP 221</b>	<b>Advanced Elements of Construction</b>	<b>Finish Carpentry</b>
<b>CARP 230</b>	<b>Stair Building and Framing</b> No prerequisites	<b>Stair Building and Framing</b> Prerequisite: MATH 207
<b>CARP 231</b>	<b>Roof Framing</b> No prerequisites	<b>Roof Framing</b> Prerequisite: MATH 207
<b>CARP 240A</b>	<b>Construction Rehabilitation</b>	<b>Construction Rehabilitation/Kitchens</b>
<b>CARP 240B</b>	<b>Construction Rehabilitation</b>	<b>Construction Rehabilitation/Bathrooms</b>
<b>COMM 19</b>	<b>Survey of Mass Media</b>  Survey of traditional and non-traditional mass media in America: Impact of mass media trends and technology into the 21 <sup>st</sup> century; critical analysis of media messages and examination of mass media from historical, political, social, and cultural perspectives.	<b>Survey of Mass Media</b>  Survey of traditional and non-traditional mass media in America: Impact of mass media trends and technology into the 21 <sup>st</sup> century; critical analysis of media messages and examination of mass media from historical, political, social, and cultural perspectives.  Not open for credit to students who have completed or are currently enrolled in JOURN 62.
<b>DANCE 1</b>	<b>History of Dance</b>  Theory and history of dance: Dance as an art form, educational medium, and therapeutic tool; contributions of choreographers and artists.	<b>History of Dance</b>  Examines topics in classical, contemporary, social, traditional dance; emphasis on works of 20 <sup>th</sup> Century major choreographers: Survey, discussion, analysis of dance history guided by video, film, text within historical/socio-political/cultural context.
<b>DANCE 7</b>	<b>Dance Study Abroad</b>	<b>Dance Study Abroad</b> Acceptable for credit: CSU
<b>E/ET 214A</b>	<b>Electronics I</b>  Units: 4	<b>E/ET 220 Electronics I</b>  Units: 3
<b>ENGL 267B</b>	<b>Basic Writing</b>  Not open for credit to students who have completed or are currently enrolled in English 252A-B or 259A-D/269A-B.	<b>Basic Writing</b>  Not open for credit to students who have completed or are currently enrolled in English 252A-B or 269A-B.
<b>ENGL 268A</b>	<b>Basic Reading</b>  Not open for credit to students who have completed or are currently enrolled in English 252A-B or 259A-D/269A-B.	<b>Basic Reading</b>  Not open for credit to students who have completed or are currently enrolled in English 252A-B or 269A-B.
<b>ENGL 268B</b>	<b>Basic Reading</b>  Not open for credit to students who have completed or are currently enrolled in English	<b>Basic Reading</b>  Not open for credit to students who have completed or are currently enrolled in English

## COURSE CHANGES

COURSE CHANGES		
	252A-B or 259A-D/269A-B.	252A-B or 269A-B.
<b>JOURN 55</b>	<b>Introduction to Journalism</b>  Survey of careers in journalism: Study of news media including history and philosophy of news dissemination, and theories of communication; analysis of daily news emphasizing political, historical, economic, and cultural forces which shapes events; may include analysis of reporting and writing news.	<b>Introduction to Journalism</b>  Practical newspaper experience: Study of press history, media law, ethics, and production of a magazine featuring student newspaper stories.
<b>JOURN 62</b>	<b>Mass Media and Society Pending at State</b>  Communication techniques from personal to mass media: Human communication and the path to today's mass media including newspapers, TV, radio, magazines, movies, books and the internet; exploration of the role of advertising and public relations, along with cultural, social, and corporate influences on mass media content.	<b>Survey of Mass Media</b>  Survey of traditional and non-traditional mass media in America: Impact of mass media trends and technology into the 21 <sup>st</sup> century; critical analysis of media messages and examination of mass media from historical, political, social, and cultural perspectives.  Not open for credit to students who have completed or are currently enrolled in COMM 19
<b>KIN 54A</b>	<b>Cross Fitness I--Fundamentals</b>	<b>SPFT 54A Cross Fitness I--Fundamentals</b>
<b>KIN 54B</b>	<b>Cross Fitness II--Beginning</b>	<b>SPFT 54B Cross Fitness II--Beginning</b>
<b>KIN 54C</b>	<b>Cross Fitness III--Intermediate</b>	<b>SPFT 54C Cross Fitness III--Intermediate</b>  Not open for credit to students who have completed or are currently enrolled in KIN 54C.
<b>KIN 59B</b>	<b>Strength Training for Sports II--Beginning</b>	<b>SPFT 59B Strength Training for Sports II--Beginning</b>  Not open for credit to students who have completed or are currently enrolled in KIN 59B
<b>KIN 59C</b>	<b>Strength Training for Sports III--Intermediate</b>	<b>SPFT 59C Strength Training for Sports III--Intermediate</b>  Not open for credit to students who have completed or are currently enrolled in KIN 59C
<b>KIN 86C</b>	<b>Flag Football III--Intermediate</b>	<b>SPFT 59C Flag Football Sports III--Intermediate</b>  Not open for credit to students who have completed or are currently enrolled in KIN 86C
<b>KIN 91</b>	<b>Football Officiating I</b>	<b>ATHL 91 Football Officiating I</b>  Not open for credit to students who have

COURSE CHANGES		
		completed or are currently enrolled in KIN 91
<b>KIN 92</b>	<b>Football Officiating II</b>	<b>ATHL 92 Football Officiating II</b>  Not open for credit to students who have completed or are currently enrolled in KIN 92
<b>LCI 203</b>	<b>Consecutive Interpretation</b>  No prerequisites	<b>Consecutive Interpretation</b>  Prerequisite: LCI 201  Recommended Preparation: LCI 202
<b>MEDIA 104</b>	<b>Beginning Digital Video Production</b>  Recommended preparation: MEDIA 110 and 115	<b>Beginning Digital Video Production</b>  Recommended preparation: MEDIA 115
<b>MEDIA 111</b>	<b>Basic Audio Production</b>  Recommended preparation: MEDIA 110	<b>Basic Audio Production</b>  No Recommended preparation
<b>MEDIA 115</b>	<b>Media-Based Computing: iLife and Mac OS X</b>  Recommended preparation: MEDIA 110	<b>Media-Based Computing: iLife and Mac OS X</b>  No Recommended preparation
<b>MEDIA 125</b>	<b>Script Writing for Video, Broadcast and Digital Cinematography</b>  Recommended preparation: MEDIA 110	<b>Script Writing for Video, Broadcast and Digital Cinematography</b>  No Recommended preparation
<b>MEDIA 130</b>	<b>Final Cut Pro I: Nonlinear Editing for Video, Broadcast and Digital Cinematography</b>  Recommended preparation: MEDIA 110 and 115	<b>Final Cut Pro I: Nonlinear Editing for Video, Broadcast and Digital Cinematography</b>  Recommended preparation: MEDIA 115
<b>MUSIC 15B</b>	<b>Jazz, Blues and Popular Music in the American Culture</b>  Study of the contemporary music scene with in-depth investigation of trends in artistic expression: Music as a revolutionary force, the role of the music industry, analysis of performances and interviews.	<b>Jazz, Blues and Popular Music in the American Culture</b>  Continuation of Music 15A. Contemporary music scene with in-depth investigation of trends in artistic expression; music as a revolutionary force, the role of the music industry, analysis of performances and interviews.
<b>PHYS 99</b>	<b>Physics for Building Science</b>  Prerequisites: MATH 201, 221-D	<b>Physics for Building Science</b>  Recommended preparation: MATH 201, 221-D
<b>POSCI 4</b>	<b>Political Theory</b>  Acceptable for credit: CSU	<b>Political Theory</b>  Acceptable for credit: CSU/UC
<b>PSYCH 24</b>	<b>Abnormal Psychology</b>  Prerequisite: PSYCH 1A	<b>Abnormal Psychology</b>  Prerequisite: PSYCH 1A Recommended preparation: ENGL 1A
<b>THART 31</b>	<b>Rehearsal and Production</b>	<b>Rehearsal and Production I</b>

COURSE CORRECTIONS		
DEPT/NO.	CHANGE COURSE FROM:	CHANGE COURSE TO:
Associate of Arts Degree in Communication Studies for Transfer	COMM 5 Public Speaking	COMM 45 Public Speaking
ATHL 1	Intercollegiate Women's Basketball	Intercollegiate Women's Basketball Acceptable for credit: CSU/UC Repeatable 3 times
ATHL 12	Baseball Foundations	Baseball Foundations Acceptable for credit: CSU/UC Repeatable 3 times
ATHL 17	Intercollegiate Football	Intercollegiate Football Acceptable for credit: CSU/UC Repeatable 3 times
ATHL 51	Intercollegiate Women's Water Polo	Intercollegiate Women's Water Polo Acceptable for credit: CSU/UC Repeatable 3 times
ATHL 71	Intercollegiate Women's Volleyball	Intercollegiate Women's Volleyball Acceptable for credit: CSU/UC Repeatable 3 times
BIOL 79	Bioreactor Cell Culture and Protein Recovery Prerequisite: BIOL 3, 73 and 75	Bioreactor Cell Culture and Protein Recovery Prerequisite: BIOL 3 or 73 or 75
CULIN 51	Supervision in the Hospitality Industry Pre-requisite: COUN 31, 33, 53, 232	Supervision in the Hospitality Industry Pre-requisite: CULIN 31, 33, 53, 232
MATH 221	Technical Mathematics Prerequisite: MATH 251A-D and or MATH 250	Technical Mathematics Prerequisite: MATH 251A-D or MATH 250
M/LAT 20	Civic Engagement in Latino Communities Acceptable for credit: CSU, UC	Civic Engagement in Latino Communities Acceptable for credit: CSU
SOC 1	Introduction to Sociology No Recommended preparation	Introduction to Sociology Recommended preparation: ENGL 1A
SOC 120	Introduction to Research Methods No prerequisite No Recommended preparation	Introduction to Research Methods Prerequisite: SOC 1 Recommended preparation: MATH 13
THART 19	Script Analysis	THART 20 Script Analysis
THART 22	No title	Acting III

COURSE DEACTIVATIONS		
DEPT/NO.	COURSE TITLE	EFF
AFRAM 6	African-American Philosophy	M14
AFRAM, ASAME, M/LAT, NATAM 17	Perspectives of American Racism	S15
ASAME 29	China in the 20 <sup>th</sup> Century	S15
CHIN 25	Chinese Character Writing	F14
CIS 42	Computer Information Systems	S15
CIS 45A	Computer Information Systems	S15
CIS 96A	Introduction to System/Software Security and Encryption	S15
CIS 201A	Computer Information Systems	S15
CIS 201B	Computer Information Systems	S15
CIS 203	Computer Information Systems	S15
CIS 217	Computer Information Systems	S15
CIS 218	Computer Information Systems	S15
CIS 242A	Computer Information Systems	S15
CIS 244	Computer Information Systems	S15
CIS 255	Computer Literacy Preparation (Project Bridge)	S15
CULIN 220	Culinary Arts 220	S15
CULIN 230	Culinary Arts 230	S15
CULIN 240	Culinary Arts 240	S15
DANCE 3	Dance Composition	S15
DANCE 20	Haitian Dance	F13
DANCE 22	West African Dance	F13
DANCE 24	Ballroom Dance	F13
DANCE 30	Jazz Dance	F13
DANCE 40	Modern Dance	F13
DANCE 44	Salsa	F13
DANCE 50	Jazz Tap	F13
DANCE 55	Polynesian Dance	F13
DANCE 200	Non-Strenuous Stretch and Strength for Dancers	F13
E/ET 201	Electricity/Electronics Technology	S15
E/ET 216A	Industrial Control I	S15
E/ET 216B	Industrial Control II	S15
ENGL 2	Advanced Expository Writing	S15
ENGL 209	Writing the Research Paper	S15
HIST 3C	Modern World History Since 1750	F13
JOURN 58	Publicity Writing and Newsletter Layout	S15
LIS 500	Computer Laboratory for Library Information Studies	S15
MUSIC 1A	Musicianship	F15
MUSIC 1B	Musicianship	F15
MUSIC 14B	Introduction to Chinese Opera	F15
MUSIC 16	Choral Repertoire and Management	S15
MUSIC 17	College Band and Management	F14
MUSIC 18	Stage Band Repertoire and Management	S15
MUSIC 20	College Band	F14
MUSIC 23	Stage Band	F15
MUSIC 25	College Choir	F15
MUSIC 27	Modern Jazz Ensemble	F15
MUSIC 31	String Ensemble	S15
MUSIC 34	Pop/Jazz/Gospel Vocal Styles	F13
MUSIC 35	Classic Guitar	F13





---

**PROGRAM ADDITIONS**


---

**Biomedical Engineering Technology Certificate of Achievement**

Thorough technical preparation for career employment in biomedical and medical device manufacturing and engineering technology for laboratory operations. Technical training is provided in biomedical engineering instrumentation, rapid prototyping processes, cleanroom protocols for fabrication of micro/nano-scale devices and components, electronic technology, and compliance with Federal Food and Drug Administration. Regulations related to the medical device manufacturing sector.

Career Opportunities in

1. Advanced manufacturing biomedical technician. 2. Micro/nano-scale fabrication and characterization technician for biomedical technology. 3. Maintenance technicians (medical device equipment and repair).

<b>First Semester:</b>	<b>Units</b>
E/ET 204 Technical Mathematics for Electricians	3
E/ET 203 Basic Electricity	4
CIS 205 Computer Literacy	1
<b>or</b>	
BUS 219 Computer Literacy	1
ENGIN 50 Fundamentals of Biomedical Engineering Instrumentation	3
<b>Second Semester:</b>	<b>Units</b>
MACH 20 Machine Technology	4
E/ET 214A Electronics I	3-4
ENGIN 51 Introduction to Biomedical Engineering I	3
ENGIN 53 Regulations for Medical Device Technology	1
<b>Total Units</b>	<b>23-24</b>

---

**Community Change Studies Program Certificate of Proficiency**

The Community Change Studies program combines academic course work and experiential learning to prepare students for careers in community development and related efforts to impact the quality of life in low-income communities and communities of color. The program is designed to equip students with the foundational knowledge and practical skills they will need to take on increasing levels of responsibility in careers in community organizing, development, and other efforts to involve residents, parents, youth and other stakeholders as leaders and practitioners in improving education, public health, housing, jobs creation and other conditions in their communities. Students will engage in academic classroom work with a community engagement component as well as 120 hours of on-site learning (paid internship) at a local community organizing or community development organization.

Career Opportunities in

Community Change Studies graduates will have strong backgrounds for careers in nonprofit, public policy, and systems level work and for academic study at four-year institutions. They will work directly with public and private agencies to build the capacity of individuals and organizations in the East Bay. Many of these positions will be in the nonprofit industry, which, according to the National Center for Charitable Statistics, accounts for 9.2% of all wages and salaries paid in the U.S. Some jobs will also be in human services, where the U.S. Bureau of Labor Statistics projects a 23% growth between 2008 and 2018; these professions include individual and family services, mental health, a range of community rehabilitation services, state government agencies, and community-based organization advocates.

		<b>Units</b>
ETHST 001	Introduction to Ethnic Studies	3
ETHST 012	Economics and Social Change: Racial Conflict and Class in America	3

ETHST 013	Introduction to Community Based Research in Urban America	3
ETHST 014	Community Building and Transformation in Urban America	3
COPEd 451	Occupational Work Experience	3
<b>Total Units</b>		<b>15</b>

---

### **English as a Second Language: High Intermediate Certificate of Proficiency**

The High Intermediate Certificate of Proficiency in ESL verifies that a student has successfully completed three ESL core classes (Reading and Writing, Listening and Speaking, and Grammar) at the high intermediate level. Students interested in completing this certificate should consult with the ESL program chair and a counselor.

#### Career Opportunities in

This certificate will prepare immigrant students for vocational programs and job advancement. The certificate will provide international students with evidence of English study, which makes a job-seeker more competitive in many countries.

<b>Complete the following core requirement courses:</b>	<b>Units</b>
ESL 223A High Intermediate Reading and Writing	6
ESL 216A High Intermediate Grammar	4
<b>or</b>	
ESL 217A Advanced Grammar	4
ESL 233A High Intermediate Listening and Speaking	4
<b>or</b>	
ESL 50A Advanced Listening and Speaking	4
<b>Total Units</b>	<b>14</b>

---

### **English as a Second Language: Intermediate Certificate of Proficiency**

The Intermediate Certificate of Proficiency in ESL verifies that a student has successfully completed three ESL core classes (Reading and Writing, Listening and Speaking, and Grammar) at the intermediate level. Students interested in completing this certificate should consult with the ESL program chair and a counselor.

#### Career Opportunities in

This certificate will prepare immigrant students for vocational programs and job advancement. The certificate will provide international students with evidence of English study, which makes a job-seeker more competitive in many countries.

<b>Complete the following core requirement courses:</b>	<b>Units</b>
ESL 222A Intermediate Reading and Writing	6
ESL 232A Intermediate Listening and Speaking	4
<b>or</b>	
ESL 233A High Intermediate Listening and Speaking	4
<b>or</b>	

ESL 50A Advanced Listening and Speaking	4
ESL 215A Intermediate Grammar	4
<b>or</b>	
ESL 216A High Intermediate Grammar	4
<b>or</b>	
ESL 217A Advanced Grammar	4
<b>Total Units</b>	<b>14</b>

---

### **English as a Second Language: Advanced Certificate of Proficiency**

The Advanced Certificate of Proficiency in ESL verifies that a student has successfully completed 14 units of college-level work, including the Advanced ESL Reading and Writing course and at least four other units of Advanced ESL. Students interested in completing this certificate should consult with the ESL program chair and a counselor.

#### Career Opportunities in

This certificate will help prepare students for vocational programs and job advancement. The certificate will provide international students with evidence of English study, which makes a job-seeker more competitive in many countries.

#### **Complete the following core requirement courses:**

	<b>Units</b>
ESL 50A Advanced Listening and Speaking	4
ESL 52A Advanced Reading and Writing	6
ESL 217A Advanced Grammar	4

**If you have only taken two of the above courses, the remaining course required for this certificate can be any of the following ESL electives:**

	<b>Units</b>
ESL 211 Reading for College Success in the Humanities and Social Sciences	2
ESL 219A Applied Grammar and Editing	4

Up to four college transfer units in a discipline other than ESL

<b>Total Units</b>	<b>14</b>
--------------------	-----------

PROGRAM CHANGES			
CHANGE PROGRAM FROM		CHANGE PROGRAM TO	
<b>Environmental Control Technology (ECT) Building Performance and Energy Efficiency Certificate of Achievement Requirements:</b>		<b>Environmental Control Technology (ECT) Building Performance and Energy Efficiency Certificate of Achievement Requirements:</b>	
<b>FIRST SEMESTER</b>		<b>FIRST SEMESTER</b>	
ARCH 112 Building Systems	2	E/ET 202 Fundamentals of Electricity for ECT	2
CARP 205 Green Construction Techniques and Materials	2	ECT 11 Mechanical and Electrical Devices	2
CARP 233 Electrical for Carpenters	1.5	ECT 12 Blueprint Reading and Interpretation for ECT	1.5
CARP 240A Construction Rehabilitation	2	ECT 13 Fundamentals of Refrigeration	4
ECT 1 Physics for Building Science	2	ECT 211 Mechanical and Electrical Codes	1.5
ECT 28 Energy Management and Efficiency For Buildings	2	ECT 214 Technical Mathematics for ECT	3
ECT 38 Measurement of Building Energy Efficiency	2	WELD 215 Welding for ECT Technicians	1.5
<b>SECOND SEMESTER</b>		<b>SECOND SEMESTER</b>	
CARP 206 Energy and Weatherization	3.5	E/ET 221 Motors and Drives	2
CARP 232 Plumbing for Carpenters	1.5	ECT 14 Advanced Refrigeration	2
E/ET 227 Customer Service for the Building Trades	2	ECT 15 Refrigeration Troubleshooting	2
ECT 16 Fundamentals of Heating and Air Conditioning	2	ECT 16 Fundamentals of Heating and Air Conditioning	2
ECT 17 Heating and Air Conditioning Troubleshooting	1	ECT 17 Heating and Air Conditioning Troubleshooting	1
ECT 18 HVAC Installation Practices	1	ECT 18 HVAC Installation Practices	1
ECT 39 Energy Auditing and Computer Analysis of Building Efficiency	2	ECT 28 Energy Management and Efficiency in Building Systems	2
ECT 213 Indoor Air Quality	1		
<b>TOTAL UNITS</b>	<b>29.5</b>	<b>TOTAL UNITS</b>	<b>25.5-27.5</b>

**Laney College**  
**General Education Requirements for AA/AS Degrees**  
**2014-2015 Advising Form**

Student's Name (Please Print): \_\_\_\_\_  
Last
First
Middle
Student ID #
Major

**Legend: R=Remaining IP=In Progress C=Completed U=Units G=Grade**

**OVERALL REQUIREMENTS**

Candidates for the Associate Degree must complete at least 60 units to include courses in a Major, General Education, and Electives, as necessary (see catalog for details).

1. A minimum grade-point average of 2.0 ("C") is required in **EACH** of the following:
  - Overall grade-point average
  - General Education Requirements
2. A minimum grade of "C" or better is required in **EACH COURSE** in the major, English Composition (Area 4a), and Mathematics (Area 4b).
3. At least 12 units must be completed at Laney.
4. Students must complete a minimum of 19 units distributed among Areas 1, 2, 3, 4a, 4b, 4c, 4d and 5.

**NOTES:** While a course might satisfy more than one General Education Requirement, it may not be counted more than once for this purpose (see exception for Ethnic Studies courses). PCCD will accept a course with a minimum of 4 quarter units to satisfy an area that requires 3 semester units, and a course with a minimum of 1.5 quarter units to satisfy Area 4c which requires a minimum of 1 semester unit.

**GRADUATION EVALUATION**

It is the student's responsibility to file a "Petition for an Associate Degree" by the deadline specified in the College Academic Calendar, (available in the class schedule or website). Students should file the petition once all course requirements are completed or final courses are in progress. Official transcript of any course work completed outside Peralta District must be on file prior to requesting the evaluation or accompany the petition. Petitions are available in the Admissions and Records Office and must be completed by appointment with a counselor.

**AREA 1 – NATURAL SCIENCE**

One course with a minimum value of 3 semester units from the following:

- ANTHR 1**
- ASTR 10**
- BIOL 1A, 1B, 2, 3, 4, 10, 11, 20A, 20B, 24, 76**
- CHEM 1A, 1B, 12A, 12B, 25, 30A, 30B**
- ECT 1\*, 101**
- ENGIN 100**
- GEOG 1, 9**
- GEOL 10**
- PHYSC 15, 20, 22, 25**
- PHYS 3A, 3B, 4A, 4B, 4C, 10, 99\***

\* Students will receive credit for one course only.

Course from other College:

External Exam:

	R	IP	C	U	G

**AREA 2 – SOCIAL AND BEHAVIORAL SCIENCES**

One course with a minimum value of 3 semester units.

**AFRAM** 1, 2, 5, 8, 11, 12, 14A, 14B, 16, 23, 30, 31, 32, 35\*\*, 38, 45\*\*\*, 50A, 50B

**ANTHR** 2, 3, 7, 14, 19

**ASAME** 21, 26, 29, 30, 32, 35\*\*, 45A, 45B

**BIOL** 27\*

**BUS** 5

**COMM** 19

**COUN** 30, 230

**ECON** 1, 2

**EDUC** 1

**ENGIN** 100

**ETHST** 1, 12, 13, 14

**GEOG** 2, 3, 8

**HIST** 3B, 5, 7A, 7B, 17, 19

**HLTED** 1

**HUMAN** 45\*\*\*

**JOURN** 62

**LABST** 10, 13, 20, 21, 22

**M/LAT** 12, 23, 31, 35\*\*

**NATAM** 1, 2, 35\*\*

**POSCI** 1, 2, 3, 4, 6, 18, 21

**PSYCH** 1A, 6, 12\*, 21, 24, 28

**SOC** 1, 2, 5, 13, 120

\* or \*\* or \*\*\* *Students will receive credit for one course only.*

Course from other College: \_\_\_\_\_ External Exam: \_\_\_\_\_

- over -

AREA 3 – HUMANITIES	R	IP	C	U	G
<p>One course with a minimum value of 3 semester units.</p> <p><b>AFRAM</b> 26, 29, 45*                              <b>HUMAN</b> 6, 7, 16, 30A, 30B, 31A, 31B 40, 45* <b>ANTHR</b> 7    <b>JAPAN</b> 1A, 1B <b>ART</b> 1, 2, 3, 4, 5, 7, 40, 129, 141, 144, 145      <b>M/LAT</b> 30A, 30B <b>ASAME</b> 30    <b>MUSIC</b> 2A, 2B, 8A, 8B, 8C, 8D, 9, 10, 15A, 15B <b>CHIN</b> 1, 2, 3, 4                                      <b>PHIL</b> 1, 2, 4, 10, 20A, 20B, 30, 37 <b>COMM</b> 2A    <b>SPAN</b> 1A, 1B, 2A, 2B, 22A, 22B, 40 <b>DANCE</b> 1, 7    <b>THART</b> 2,11, 31+ <b>ENGL</b> 1B,10A, 10B, 12, 17A, 17B, 30A, 30B, 31, 43, 210A, 210B, 217A, 217B, 230A, 230B, 231, 243 <b>FREN</b> 1A, 1B, 2A, 2B</p> <p><i>* Students will receive credit for one course only. + Students must take for 3 units to satisfy Area 3.</i></p> <p>Course from other College: _____ External Exam: _____</p>					
<p><b>AREA 4 – LANGUAGE AND RATIONALITY</b> One course from each sub-area must be completed.</p> <p><b>4a. English Composition:</b> One course with a minimum value of 3 semester units. <b>ENGL</b> 1A, 1B, 5                                      <b>ESL</b> 52A, 52B</p> <p>Course from other College: _____ External Exam: _____</p>					
<p><b>4b. Mathematics:</b> May be met by one of the two plans listed below: <b>Plan I:</b> Completion of one course, 3 semester units minimum: <b>MATH</b> 1, 2, 3A, 3B, 3C, 3E, 3F, 11, 13, 15,16A ,16B, 50, 202, 203, 205AB*, 211ABCD* 220 CDEFG**, 221 * four units required; ** three units required. <b>Plan II:</b> Credit by Examination of Mathematics 203: (effective fall 2009 unless student has prior catalog rights, see a Counselor for more information) (1) examination will be offered twice each semester – dates to be announced by Mathematics Department (2) examination may be repeated one time only when grade is less than “C”. Course from other College: _____ External Exam: _____</p>					
<p><b>4c. Computer Literacy:</b> One course with minimum value of 1 semester unit. <b>ARCH</b> 104A, 204                                      <b>GRAT</b> 132, 134, 135, 136 <b>BUS</b> 24, 38, 40A, 40AA, 40AB, 43A, 43B, 43BA, 43BB,      230 219, 222, 223, 237, 245B, 245E, 245EA, 245EB, 246      <b>JOURN</b> 65 <b>CIS</b> All courses numbered 1-248                              <b>LIS</b> 85, 200 <b>CONMT</b> 31A, 31B                                      <b>LRNRE</b> 211 <b>ECT</b> 37*    <b>MACH</b> 20, 30, 31 <b>E/ET</b> 37*    <b>MEDIA</b> 115, 151 <b>ENGIN</b> 77</p> <p><i>* Students will receive credit for one course only.</i></p> <p>Course from other College: _____ External Exam: _____</p>					
<p><b>4d. Oral or Written Communication, or Literature:</b> One course with a minimum value of 3 semester units. <b>BUS</b> 201 <b>COMM</b> 1A, 2A,19, 20, 44, 45 <b>ENGL</b> All courses numbered 1 through 247 except 48, 49, 205, 206AB, 209 <b>ESL</b> 50A, 50B, 52A, 52B <b>JOURN</b> 21 <b>MEDIA</b> 100A, 100B, 100C, 100D</p> <p>Course from other College: _____ External Exam: _____</p>					

<p><b>AREA 5 – ETHNIC STUDIES</b> One course with a minimum value of 3 semester units.</p> <p><b>AFRAM</b> 1, 2, 5, 8, 11, 12, 14A, 14B, 16, 23 26, 29, 30, 31, 32, 35**, 38, 45*</p> <p><b>ANTHR</b> 14</p> <p><b>ART</b> 7</p> <p><b>ASAME</b> 21, 30, 32, 35**, 45A, 45B</p> <p><b>ENGL</b> 31, 231</p> <p><b>ETHST</b> 1, 12, 13, 14</p> <p><i>* or ** Students will receive credit for one course only.</i></p> <p><b>Note:</b> Ethnic Studies courses can be double-counted to fulfill a subject-requirement in one other General Education Area, (although the units are counted only once).</p> <p>Course from other College: _____ External Exam: _____</p>					
--	--	--	--	--	--



**Laney College**  
**California State University General Education Breadth Requirements**  
**2014-2015 ADVISING FORM**

Student's Name: \_\_\_\_\_  
Last
First
Middle
Student ID#
Major

Legend: R=Remaining IP=In Progress C=Completed U=Units G=Grade	R	IP	C	U	G
<b>AREA A: ENGLISH LANGUAGE COMMUNICATION AND CRITICAL THINKING - minimum of 9 semester (or 12 quarter) units, one 3-unit course from each sub-group with a grade of "C" or better.</b> <u><b>A1 – Oral Communication</b></u> COMM 1A, 44, 45 Course from other College: _____					
<u><b>A2 – Written Communications</b></u> ENGL 1A Course From Other College: _____ External Exam: _____					
<u><b>A3 – Critical Thinking*</b></u> ENGL 5 PHIL 10 *For some Engineering majors exceptions may apply (See a counselor for details). Course from other College: _____					
<b>AREA B: SCIENTIFIC INQUIRY AND QUANTITATIVE REASONING – minimum of 9 semester (or 12 quarter) units, one from Physical Science, one from Life Science and one from Mathematics/Quantitative Reasoning. One lab activity required from either Physical Science or Life Science. (L=with Lab)</b> <u><b>B1 – Physical Science</b></u> ASTR 10 CHEM 1A/L, 1B/L, 12A/L, 12B/L, 25, 30A/L, 30B/L GEOG 1, 9 GEOL 10 PHYSC 15, 20, 22, 25 PHYS 3A/L, 3B/L, 4A/L, 4B/L, 4C/L, 10 Course from other College: _____ External Exam: _____					
<u><b>B2 – Life Science</b></u> ANTHR 1 BIOL 1A/L, 1B/L, 2/L, 3/L, 4/L, 10/L, 11, 20A/L, 20B/L, 24/L Course from other College: _____ External Exam: _____					
<u><b>B3 – Laboratory Activity</b></u> – one course from either B-1 or B-2 with laboratory; or one of the following: ANTHR 1L GEOG 1L PHYSC 20L					
<u><b>B4 – Mathematics/Quantitative Reasoning (Must be completed with a grade of "C" or better)</b></u> MATH 1, 2, 3A, 3B, 3C, 3E, 3F, 11, 13, 15, 16A, 16B, 50 PHYS 4A, 4B, 4C Course from other College: _____ External Exam: _____					
<b>AREA C: ARTS AND HUMANITIES – minimum of 9 semester (or 12 quarter) units divided between the C1 and C2 sub-groups.</b> <u><b>C1 – Arts: Arts, Cinema, Dance, Music, Theater</b></u> AFRAM 26 ART 1, 2, 3, 4, 5, 7, 129 DANCE 1, 5 MUSIC 2A, 2B, 3A, 3B, 4A, 4B, 8A, 8B, 8C, 8D, 9, 10, 14A, 14B, 15A, 15B THART 2, 11 Course from other College: _____ External Exam: _____					

**C2 – Humanities: Literature, Philosophy, Languages Other Than English**

**AFRAM** 29, 45\*

**ASAME** 30

**CHIN** 1, 2, 3, 4

**COMM** 2A

**ENGL** 1B, 10A, 10B, 12, 17A, 17B, 20,  
30A, 30B, 31, 43

**FREN** 1A, 2A, 2B

**HUMAN** 6, 7, 16, 30A, 30B, 31A, 31B, 40, 45\*

**JAPAN** 1A,1B

**M/LAT** 30A, 30B

**PHIL** 1, 2, 20A, 20B, 30, 37

**SPAN** 1A,1B, 2A, 2B, 22A, 22B, 40

\* Students receive credit and certification for one course only.

Course from other College: \_\_\_\_\_ External Exam: \_\_\_\_\_

- OVER -

AREA D: SOCIAL SCIENCES – minimum of 9 semester (or 12 quarter) units from at least 2 departments.	R	IP	C	U	G
<p>AFRAM 1, 2, 5, 8, 11, 12, 14A, 14B, 16, 23, 29, 30, 31, 32, 35*, 38, 50A, 50B                      ANTHR 2<sup>1</sup>, 3, 7, 14<sup>1</sup>, 19<sup>1</sup>                      ASAME 21, 26, 29, 32, 35*, 45A, 45B                      BIOL 27**                      COMM 19                      ECON 1, 2                      ETHST 1, 13<sup>1</sup>, 14<sup>1</sup>                      GEOG 1, 2, 3, 8</p> <p>HIST 3B<sup>1</sup>, 5, 7A, 7B, 17, 19                      JOURN 62                      LABST 10                      M/LAT 12, 23, 31, 35*                      NATAM 1, 2, 35*                      POSCI 1, 2, 3, 4<sup>1</sup>, 6, 18                      PSYCH 1A, 7A, 12**, 24                      SOC 1, 2, 5, 13, 120<sup>1</sup></p> <p>* or ** Students receive credit and certification for one course only.</p> <p>Course from other College: _____ External Exam: _____</p>					
<p><b>AREA E: LIFELONG LEARNING AND SELF-DEVELOPMENT – minimum 3 semester (or 4 quarter) units.</b> For certification, DD-214 documentation will clear this area.</p> <p>ASAME 32                      BIOL 27*, 28                      COUN 24, 30, 57</p> <p>HLTED 1                      PSYCH 6, 12*</p> <p>* Students receive credit and certification for one course only.</p> <p>Course from other College: _____</p>					
<p><b>CSU GRADUATION REQUIREMENT IN U.S. HISTORY, CONSTITUTION, AND AMERICAN IDEALS</b> (<i>Not part of CSU-GE Breadth Requirements may be completed prior to transfer</i>). Any of the following combinations are acceptable:</p> <p style="text-align: center;">POSCI 1 <b>and</b> HIST 7A <b>or</b> HIST 7B <b>or</b> AFRAM 30 <b>or</b> AFRAM 31</p> <p style="text-align: center;"><b>OR</b></p> <p style="text-align: center;">POSCI 6 <b>and</b> POSCI 1 <b>and</b> HIST 7A <b>or</b> HIST 7B <b>or</b> AFRAM 30 <b>or</b> AFRAM 31</p> <p><b>NOTE:</b> Courses used to meet this requirement <b>may</b> also be used to satisfy requirement in CSU GE/Breadth Area D, (at the option of the receiving CSU campus), although units are counted once. Students are encouraged to check with a counselor for any recent changes in CSU campus exceptions.</p> <hr/> <p style="text-align: center;"><b>CSU-GE Breadth Requirements Completed:</b> _____ Full <b>or</b> _____ Partial</p> <p style="text-align: center;"><b>CSU Graduation Requirement in U.S. History, Constitution, and American Ideals Completed:</b> _____ Yes _____ No</p>					

Minimum admission eligibility for upper division transfer applicant: (1) completion of at least 60 CSU transferable units with a minimum GPA of 2.0; (2) a minimum of 30 lower division units of General Education/Breadth within the total 60 CSU transferable units completed; and (3) completion of areas A1, A2, A3 and B4 with a grade of "C" or better.

Associate Degrees for Transfer (AD-T) to CSU: (1) a minimum of 39 units of General Education/Breadth, full completion of Areas A through E; (2) a minimum GPA of 2.0; and (3) completion of at least 60 CSU transferable units. See a counselor for more transfer and AD-T information.

CSU-GE Breadth Requirements Certification: Laney College, Peralta Community College District, can certify either full certification (completion of all requirements in each subject-area) or partial certification (completion by subject- area) of the CSU General Education/Breadth. Official transcripts of any coursework completed outside Peralta District must be on file prior or accompany the certification request. Courses taken at other California Community Colleges will be placed in the CSU- GE Breadth area identified by the offering college the term the course was taken. Courses taken at other colleges/universities may be used if the course content meets the CSU-GE Breadth area standards.

Students should request certification when a final transcript is requested to be sent to their choice of CSU (campus where admission has been accepted), the term prior to transfer. The "Request for Certification" form is available from a counselor or the Admissions & Records Office and can be filed in the Admissions and Records Office. Once certification is completed student records (transcript) will reflect the full or partial CSU-GE Breadth completion.

Students are encouraged to see a counselor by appointment to discuss transfer and the CSU-GE Breadth option as part of an education plan. Counselors are available by appointment through the Counseling Office located in the Laney Tower, 3<sup>rd</sup> Floor or call (510) 464-3152 or 464-3153.

**Laney College**  
**Intersegmental General Education Transfer Curriculum (IGETC)**  
**2014-2015 ADVISING FORM**

Student's Name: \_\_\_\_\_  
 Last First Middle Student ID # Major  
 Legend: R=Remaining IP=In Progress C=Completed U=Units G=Grade

	R	IP	C	U	G
<b>AREA 1 – ENGLISH COMMUNICATION</b> <b>CSU:</b> 3 courses required, one each from Group A, B, and C. <b>UC:</b> 2 courses required, one each from Group A and B <b>Group 1A:</b> English Composition, 1 course, 3 semester (or 4-5 quarter) units <b>ENGL 1A</b> Course From Other College: _____ External Exam: _____					
<b>Group 1B:</b> Critical Thinking – English Composition, 1 course, 3 semester (or 4-5 quarter) units <b>ENGL 5</b> Course From Other College: _____					
<b>Group 1C:</b> Oral Communication ( <i>CSU requirement only</i> ), 1 course, 3 semester (or 4-5 quarter) units <b>COMM 1A, 44, 45</b> Course From Other College: _____					
<b>AREA 2 – MATHEMATICAL CONCEPTS AND QUANTITATIVE REASONING</b> 1 course, 3 semester (or 4-5 quarter) units <b>MATH 1, 2, 3A, 3B, 3C, 3E, 3F, 11, 13, 15, 16A, 16B</b> Course From Other College: _____ External Exam: _____					
<b>AREA 3 – ARTS AND HUMANITIES</b> At least 3 courses, with at least one from the Arts and one from the Humanities: 9 semester (or 12-15 quarter) units <b>3A ARTS:</b> <b>AFRAM 26</b> <b>MUSIC 2A, 2B, 3A, 3B, 4A, 4B, 8A, 8B,</b> <b>ART 1, 2, 3, 4, 5, 7</b> <b>8C, 8D, 9, 10, 15A, 15B</b> <b>DANCE 1</b> <b>THART 2<sup>1</sup></b> Course From Other College: _____ External Exam: _____					
<b>3B HUMANITIES:</b> <b>AFRAM 29</b> <b>HUMAN 6, 7, 16, 30A, 30B, 31A, 31B, 40</b> <b>ASAME 30</b> <b>JAPAN 1B+</b> <b>CHIN 2+, 3+, 4+</b> <b>M/LAT 30A, 30B</b> <b>ENGL 1B, 12, 17A, 17B, 20, 30A, 30B, 31, 43</b> <b>PHIL 1, 2, 20A, 20B, 37</b> <b>FREN 2A+, 2B+</b> <b>SPAN 1B+, 2A+, 2B+, 22B, 40</b> Course From Other College: _____ External Exam: _____					
<b>AREA 4 – SOCIAL AND BEHAVIORAL SCIENCES</b> At least 3 courses from at least 2 disciplines or an interdisciplinary sequence: 9 semester (or 12-15 quarter) units <b>AFRAM 1, 2, 5, 8, 11, 12, 14A#, 14B#, 16, 23, 30</b> <b>HIST 3B<sup>1</sup>, 5, 7A, 7B, 17, 19</b> <b>31, 32, 35*, 38, 45***, 50A, 50B<sup>1</sup></b> <b>HUMAN 45***</b> <b>ANTHR 3, 7, 14<sup>1</sup></b> <b>JOURN 62</b> <b>ASAME 21, 26, 29, 32, 35**, 45A, 45B</b> <b>LABST 10</b> <b>BIOL 27**</b> <b>M/LAT 12, 23, 31, 35*</b> <b>COMM 19</b> <b>NATAM 1, 2,, 35*</b> <b>ECON 1, 2</b> <b>POSCI 1, 2, 3, 4<sup>1</sup>, 6, 18</b> <b>ETHST 1</b> <b>PSYCH 1A, 6, 7A#, 12**, 24</b> <b>GEOG 2, 3, 8</b> <b>SOC 1, 2, 5, 13, 120<sup>1</sup></b> Course From Other College: _____ External Exam: _____					
<b>AREA 5 – PHYSICAL AND BIOLOGICAL SCIENCES</b> At least 2 courses, one from Physical Science and one from Biological Science; at least one must include a Laboratory (indicated by "L" in parentheses): 7-9 semester (or 9-12 quarter) units <b>5A PHYSICAL SCIENCES:</b> <b>ASTR 10#</b> <b>GEOL 10</b> <b>CHEM 1A(L), 1B(L), 12A(L)#, 12B(L)#,</b> <b>PHYS 15#, 20, 20(L), 22, 25</b> <b>25, 30A(L)#, 30B(L)#</b> <b>PHYS 3A(L)#, 3B(L)#, 4A(L)#, 4B(L)#, 4C(L)#,</b> <b>GEOG 1, 1(L), 9</b> <b>10#</b>					
<b>5B BIOLOGICAL SCIENCES:</b> <b>ANTHR 1, 1(L)</b> <b>BIOL 1A(L), 1B(L), 2(L)#, 3(L), 4(L)#, 10(L)#, 11#, 20A(L)#, 20B(L)#, 24(L)#</b>					
<b>5C LABORATORY SCIENCE REQUIREMENT:</b> <i>One course with a (L) from Area 5A or 5B satisfies this requirement.</i> Course From Other College: _____ External Exam: _____					
<b>AREA 6A - LANGUAGE OTHER THAN ENGLISH (UC requirement only)</b> Completion of one course (4-5 semester units) at college level, that is considered equivalent to 2 years of high school language, with a grade of "C" or better; <b>OR</b> Completion of two years of high school course work in one language other than English with a grade of "C-" or better ( <i>official transcript required</i> ); <b>OR</b> Completion of two years of formal schooling at the sixth grade level or higher in an institution where the language of instruction is not English ( <i>documentation required</i> ); <b>OR</b> Satisfactory score on the College Board Subject Test (formerly SAT II) in a language other than English (see a counselor for required scores); <b>OR</b> Score of 3 or better on the College Board Advanced Placement Examination in a language other than English; <b>OR</b> Score of 5 or better on the International Baccalaureate Higher Level Examination in a language other than English; <b>OR</b> Satisfactory completion of a proficiency test administered by a community college or university in a language other than English. Proficiency met by: _____ Laney Course(s) that meet the proficiency level: <b>CHIN 1, FREN 1A, JAPAN 1A, SPAN 1A, 22A,</b> (or more advanced level) _____ Course from other college: Course: _____ College: _____ ( <i>official transcript required</i> )					

<b>CSU GRADUATION REQUIREMENT IN U.S. HISTORY, CONSTITUTION, AND AMERICAN IDEALS</b> ( <i>Not part of IGETC; may be completed prior to transfer</i> ). Any of the following combinations are acceptable:	R	IP	C	U	G
<p style="text-align: center;">                             POSCI 1 <b>and</b> HIST 7A <b>or</b> HIST 7B <b>or</b> AFRAM 30 <b>or</b> AFRAM 31   <b>OR</b>                              POSCI 1 <b>and</b> POSCI 6 <b>and</b> HIST 7A <b>or</b> HIST 7B <b>or</b> AFRAM 30 <b>or</b> AFRAM 31                         </p> <p><b>NOTE:</b> Courses used to meet this requirement <b>may</b> also be used to satisfy requirement in IGETC Area 4, (at the option of the receiving CSU campus), although units are counted once. Students are encouraged to check with a counselor for any recent changes in CSU campus exceptions.</p>					
<b>IGETC COMPLETED:</b> ___ Full <b>or</b> ___ Partial					
<b>CSU Graduation Requirement in U.S. History, Constitution, and American Ideals Completed:</b> ___ Yes ___ No					
<p>+ Courses designated with "+" may be counted in Language other than English and one additional area, i.e. Area 3: Humanities.</p> <p>* <u>or</u> ** <u>or</u> *** Student receives credit for one course only.</p> <p><sup>1</sup> <b>Effective Fall 2013</b></p> <p># Indicates that transfer credit may be limited by either UC or CSU or both. Please see <a href="http://www.assist.org">www.assist.org</a> and consult with a counselor for additional information.</p>					

Completion of all the requirements in the Intersegmental General Education Transfer Curriculum (IGETC) with a grade

of "C" or better will permit a student to transfer from a California community college to a campus in either the California State University (CSU) or the University of California (UC) system without the need after transfer to take additional lower-division general education courses. (Note exception: Students transferring to UC San Diego's Eleanor Roosevelt and Revelle Colleges may complete IGETC, but they must also meet specific general education requirements of those colleges.) It should be noted that completion of the IGETC is not a requirement for admission to the CSU or UC system. However to meet minimum transfer admission eligibility students may need to complete all of Area 1 and Area 2; check with counselor regarding the difference between minimum admission eligibility requirements and general education.

**Associate Degrees for Transfer (ADs-T) to CSU:** It is possible to fulfill the requirements for an AD-T by completing the IGETC pattern for UC transfer. However, students completing an AD-T and transferring to a CSU requires full completion of Areas 1 through 5 including Group 1C: Oral Communication course. See a counselor for more transfer and AD-T information.

The IGETC is **not advisable** for all transfer students. The IGETC is most advantageous for transfers who have not yet

decided on a major or a campus. Once a student has identified a major, it is important to give priority toward fulfilling all required major preparation courses, particularly in professional or "high unit" majors that select applicants on the basis of satisfaction of lower division major requirements. If a student is pursuing a major that requires extensive lower-division preparation, they may be better served by taking courses which fulfill the CSU General Education/Breadth requirements or the general education of the specific UC campus or college to which they plan to transfer, examples of such majors include, but are **NOT LIMITED** to: Engineering, Business Administration, Computer Science, Pre-professional schools and Sciences.

**Restrictions:** A student who is initially enrolled at a UC and is returning to the same UC campus (after attending a community college) is considered a "readmit" and **cannot** use IGETC. However students who initially enroll at a UC,

attend a community college and return to a **different** UC campus, may be able to use IGETC, but should check with a

Laney counselor or the campus they wish to attend. This restriction does not apply to students who have taken UC summer session or Extension classes only. Students initially enrolled at a CSU and then return to the same CSU campus (after attending a community college) should be directed to that campus for questions regarding the use of IGETC. (There is no CSU system-wide policy on this issue.)

**IGETC Certification:** Laney College, Peralta Community College District, can certify either full certification (completion

of all requirements in each subject-area) or partial certification: a maximum of two courses may be deferred and completed after transfer; Areas 1 and 2 must be completed prior to transfer. **IGETC**

**for STEM Certification:** However, if majoring in Chemistry and transferring to a UC, a maximum of three courses may be deferred and completed after transfer: one from Area 3; one from Area 4; and Area 6A. **Note:** UC Berkeley's College of Letters & Science requires full IGETC certification for all majors.

Official transcripts of any coursework completed outside Peralta District must be on file prior or accompany the certification request. Courses taken at other California Community Colleges will be placed in the IGETC area identified by the offering college the term the course was taken. Courses taken at other colleges/universities may be used if the course content meets the IGETC area standards.

Students should request certification when a final transcript is requested to be sent to their choice of UC or CSU (campus where admission has been accepted), the term prior to transfer. The "Request for Certification" form is available from a counselor or the Admissions & Records Office and can be filed in the Admissions and Records Office. Once certification is completed student records (transcript) will reflect the full or partial certification of IGETC Completion. Students are encouraged to see a counselor by appointment to discuss transfer and the IGETC option as part of an education plan. Counselors are available by appointment through the Counseling Office located on the 3<sup>rd</sup> Floor, Laney Tower or call (510) 464-3152 or 464-3153.



**Laney College**  
**900 Fallon Street**  
**Oakland, California 94607**  
**[www.laney.edu](http://www.laney.edu)**