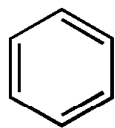
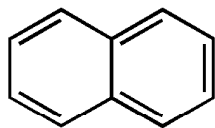


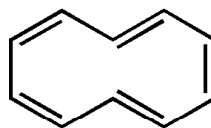
Some Common Aromatic Systems (mostly)



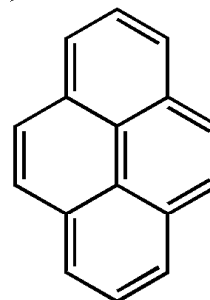
benzene



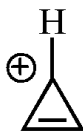
naphthalene
($\mu = 0$ D)



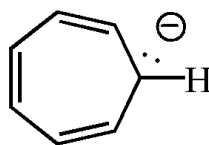
1,3,5,7,9-cyclodecapentaene



pyrene



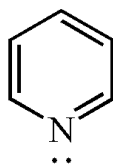
cyclopropenyl cation



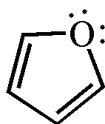
cycloheptatrienyl anion



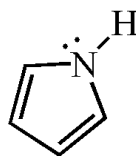
cyclopentadienyl anion



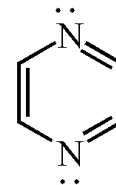
pyridine



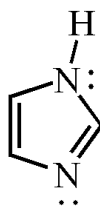
furan



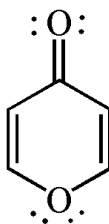
pyrrole



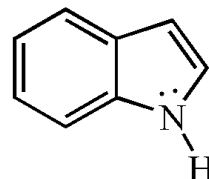
pyrazine



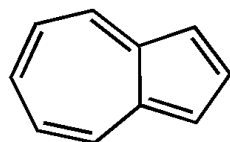
imidazole



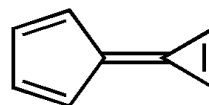
4-pyranone



indole



azulene
($\mu = 1.1$ D)



calicene
($\mu = 4.3$ D)