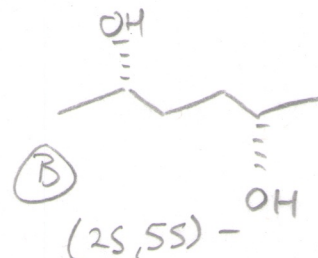
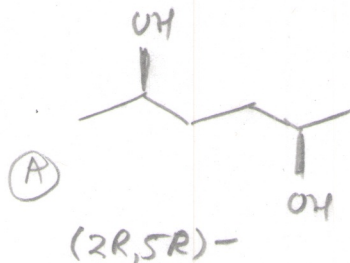
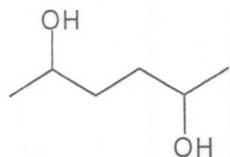


Quiz 3 (50 points)

Key

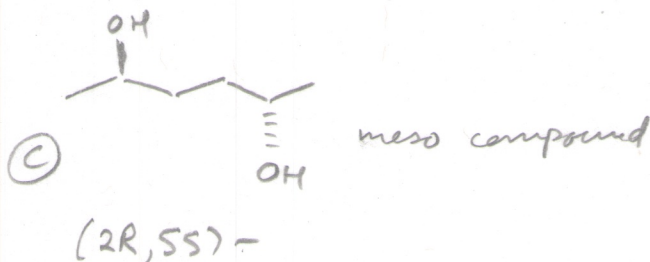
Name \_\_\_\_\_

1. Show *all* of the stereoisomers of the following compound using the correct symbols to show stereochemistry. Assign the *configuration* of any stereocenters with the appropriate notation (put these in the appropriate location in the name of the compound, which is hexane-2,5-diol). Show which of the isomers are *enantiomers* and which are *diastereomers*, and (if present) label any *meso* compounds. (25 points)

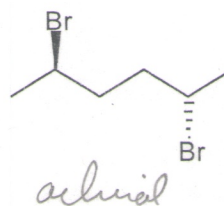
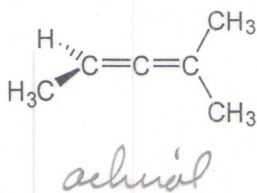
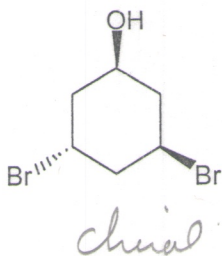


(A) & (B) are enantiomers

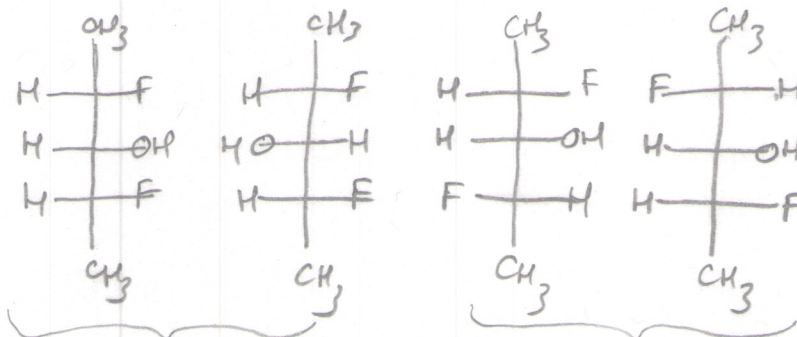
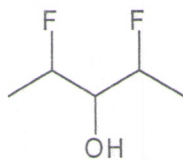
(A) & (C) } pairs of diastereomers  
(B) & (C) }



2. Label the following as either *chiral* or *achiral*. (15 points)



3. Draw all four (4) stereoisomers of the following compound (using Fisher projections may be helpful). (Yes, there are four stereoisomers!) (10 points)



these are both meso compounds

these are enantiomers