

# CHEM 12A - Caffeine Calibration Standards, Lab B, Fall 2019

## Sample Information

Acquired by : Admin  
Sample Name : 5 ppm  
Sample ID :  
Data Description :  
Tray# : 1  
Vial# : 6  
Injection Volume : 100 uL  
Data Filename : CaffeineRun Samples S19 HPLC 2\_05.lcd  
Method Filename : 150ml 5min 5-80%B LISPRP18.lcm  
Date Acquired : 3/13/2019 12:18:06 PM

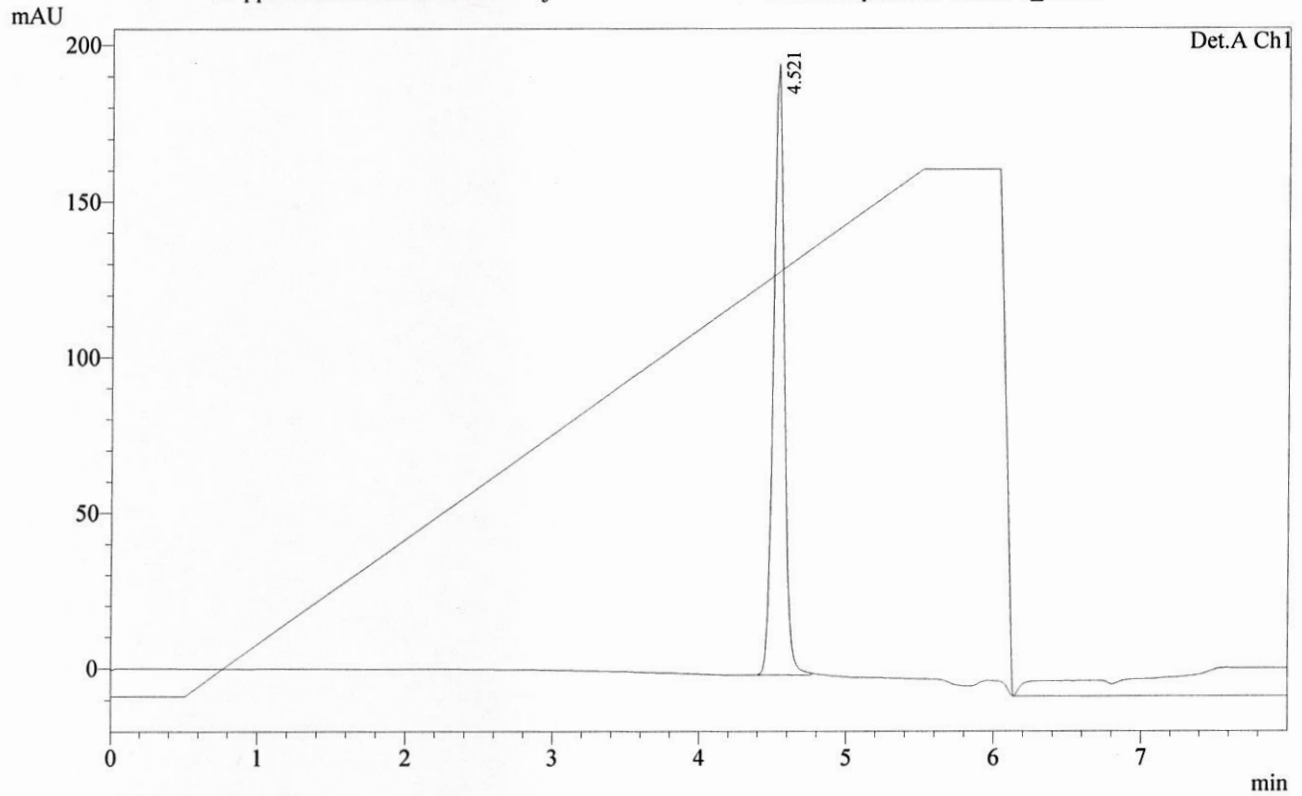
## PeakTable

Detector A Ch1 274nm

Peak#	Ret. Time	Area	Height	Area %	Height %
1	4.521	1004474	196010	100.000	100.000
Total		1004474	196010	100.000	100.000

## Chromatogram

5 ppm C:\LabSolutions\Data\Project2\190314L\CaffeineRun Samples S19 HPLC 2\_05.lcd



1 Det.A Ch1 / 274nm

Sample Information

Acquired by : Admin  
Sample Name : 10 ppm  
Sample ID :  
Data Description :  
Tray# : 1  
Vial# : 7  
Injection Volume : 100 uL  
Data Filename : CaffeineRun Samples S19 HPLC 2\_06.lcd  
Method Filename : 150ml 5min 5-80%B LISPRP18.lcm  
Date Acquired : 3/13/2019 12:27:07 PM

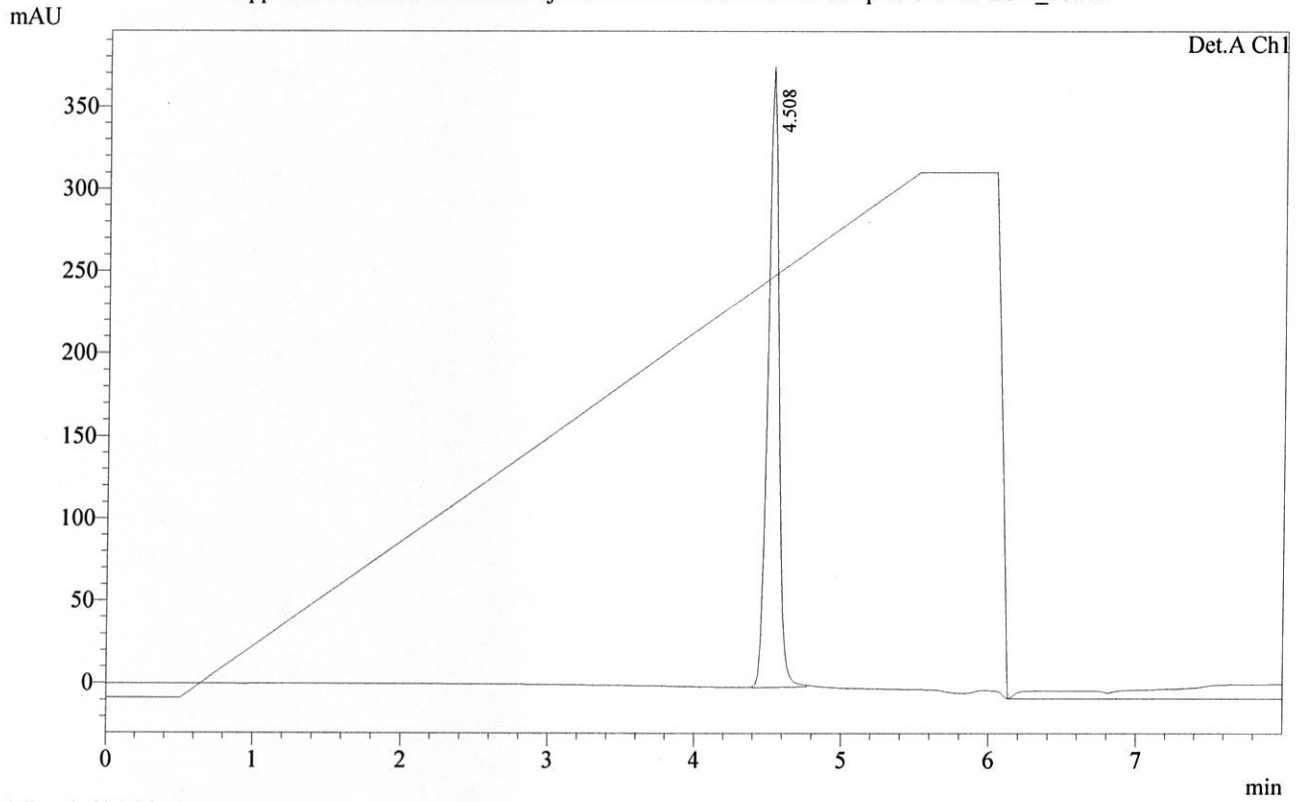
PeakTable

Detector A Ch1 274nm

Peak#	Ret. Time	Area	Height	Area %	Height %
1	4.508	1927390	376284	100.000	100.000
Total		1927390	376284	100.000	100.000

Chromatogram

10 ppm C:\LabSolutions\Data\Project2\190314L\CaffeineRun Samples S19 HPLC 2\_06.lcd



1 Det.A Ch1 / 274nm

Sample Information

Acquired by : Admin  
Sample Name : 20 ppm  
Sample ID :  
Data Description :  
Tray# : 1  
Vial# : 8  
Injection Volume : 100 uL  
Data Filename : CaffeineRun Samples S19 HPLC 2\_07.lcd  
Method Filename : 150ml 5min 5-80%B LISPRP18.lcm  
Date Acquired : 3/13/2019 12:36:08 PM

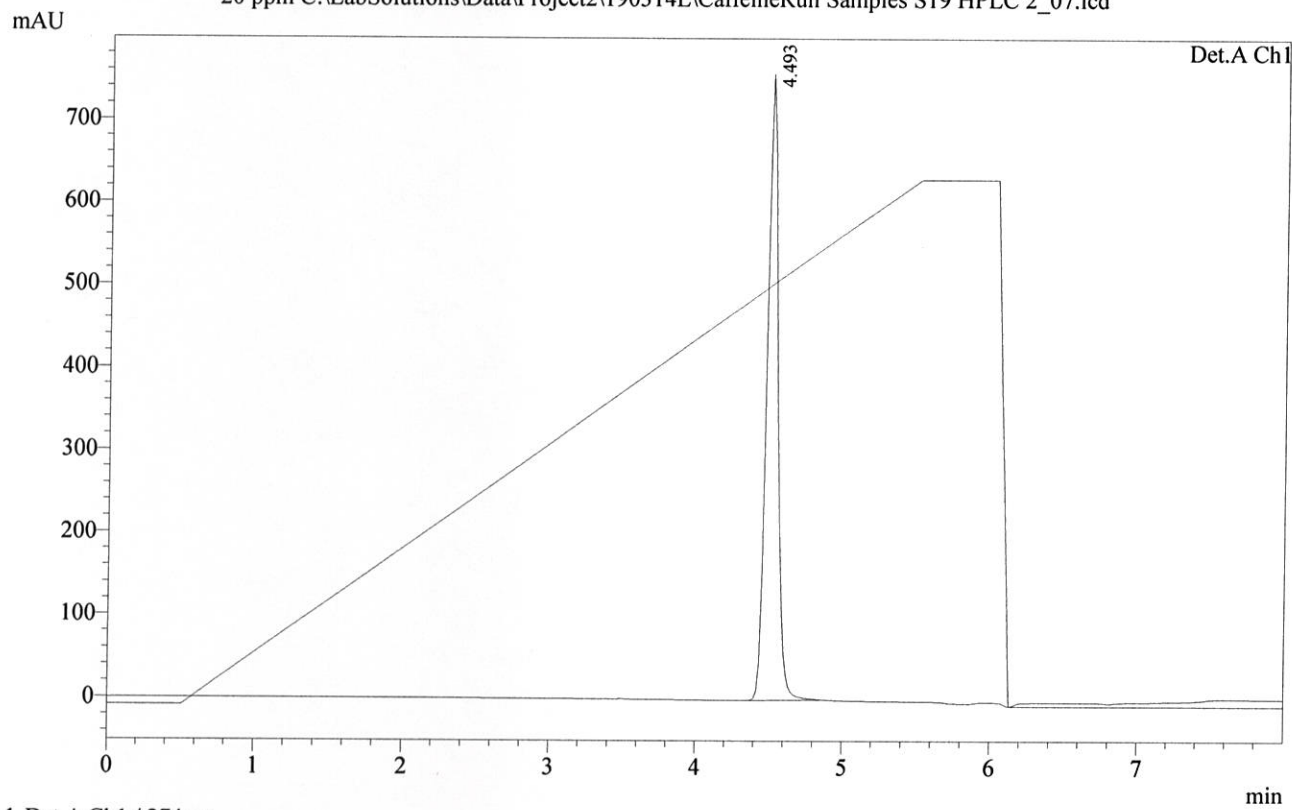
PeakTable

Detector A Ch1 274nm

Peak#	Ret. Time	Area	Height	Area %	Height %
1	4.493	3961823	758008	100.000	100.000
Total		3961823	758008	100.000	100.000

Chromatogram

20 ppm C:\LabSolutions\Data\Project2\190314L\CaffeineRun Samples S19 HPLC 2\_07.lcd



1 Det.A Ch1 / 274nm

Sample Information

Acquired by : Admin  
 Sample Name : 40 ppm  
 Sample ID :  
 Data Description :  
 Tray# : 1  
 Vial# : 9  
 Injection Volume : 100 uL  
 Data Filename : CaffeineRun Samples S19 HPLC 2\_08.lcd  
 Method Filename : 150ml 5min 5-80%B LISPRP18.lcm  
 Date Acquired : 3/13/2019 12:45:09 PM

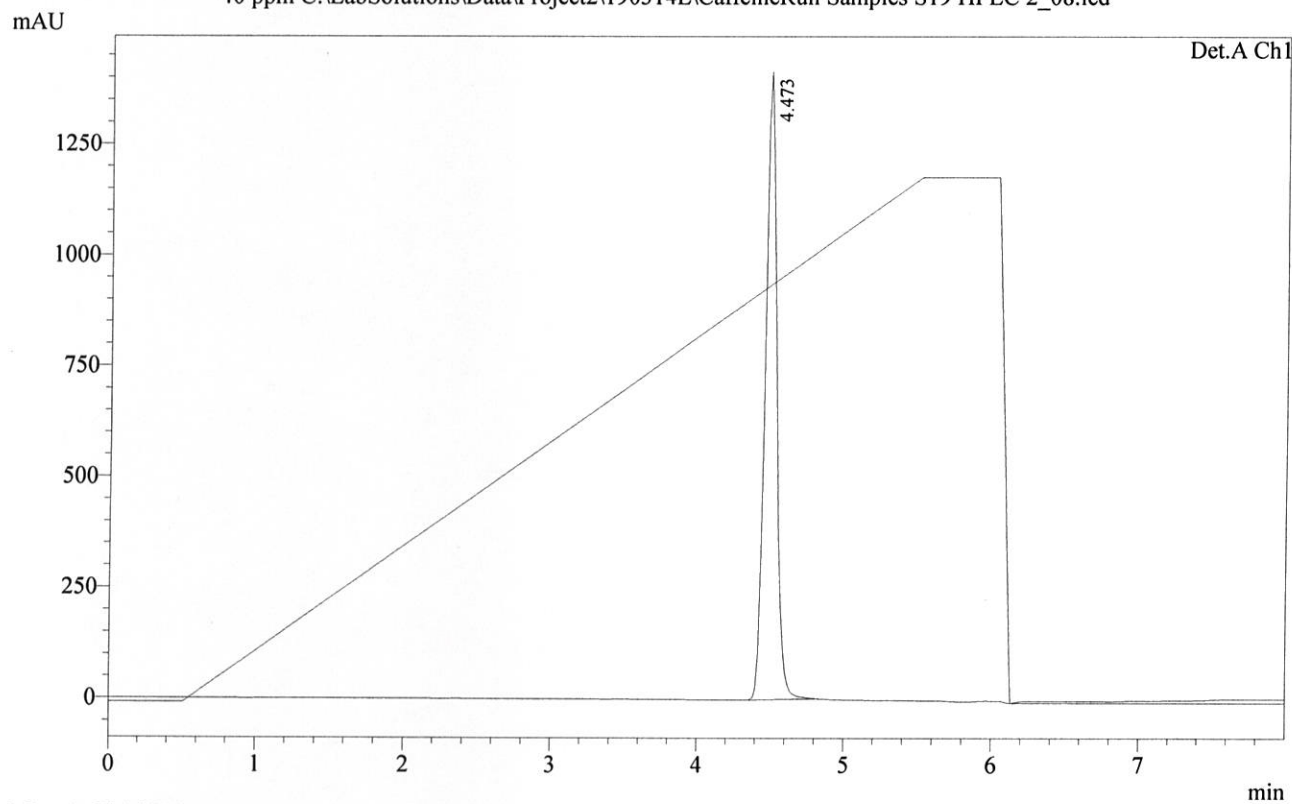
PeakTable

Detector A Ch1 274nm

Peak#	Ret. Time	Area	Height	Area %	Height %
1	4.473	7654288	1413974	100.000	100.000
Total		7654288	1413974	100.000	100.000

Chromatogram

40 ppm C:\LabSolutions\Data\Project2\190314L\CaffeineRun Samples S19 HPLC 2\_08.lcd



1 Det.A Ch1 / 274nm