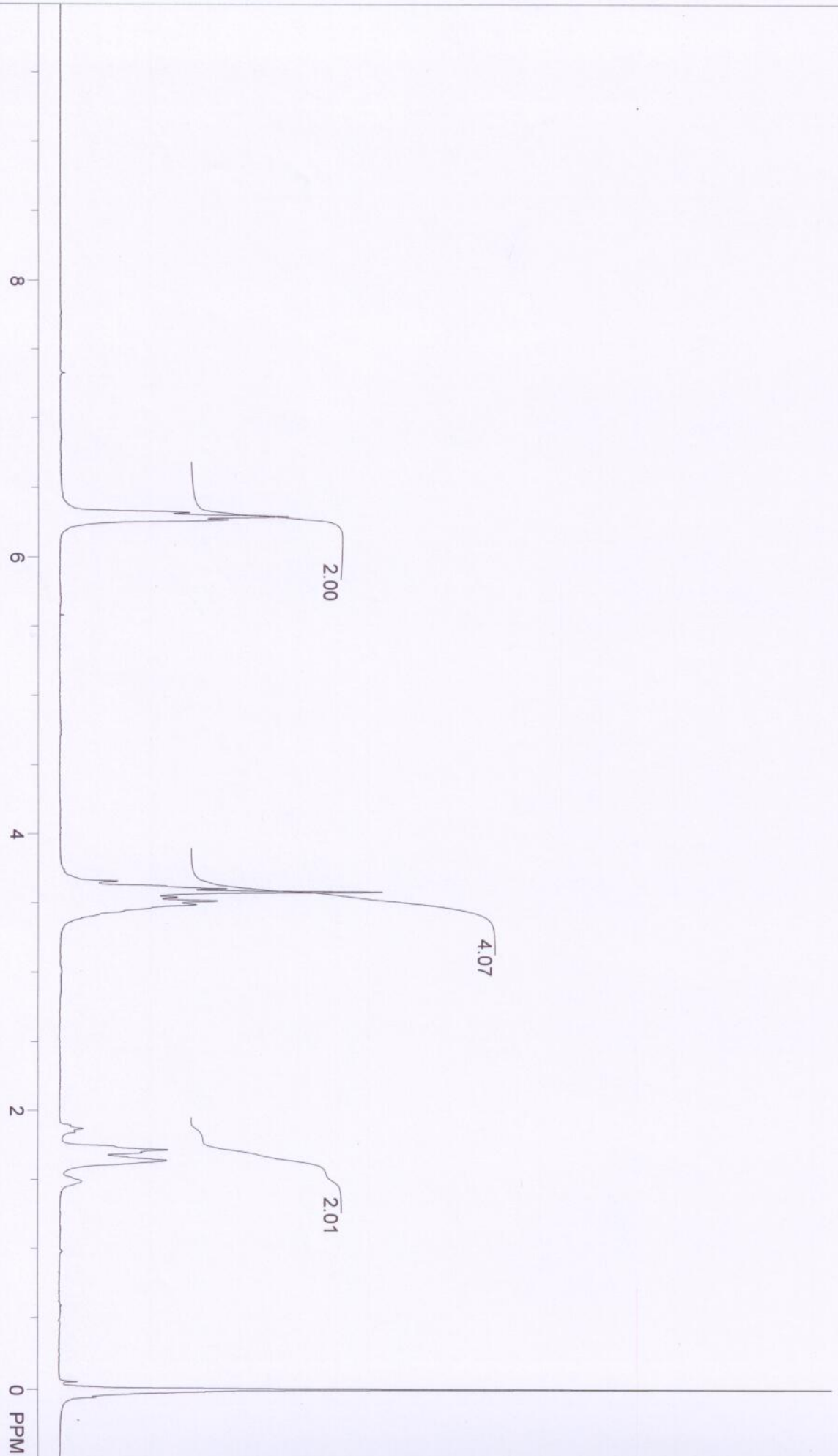


<sup>1</sup>H NMR of Diels-Alder adduct



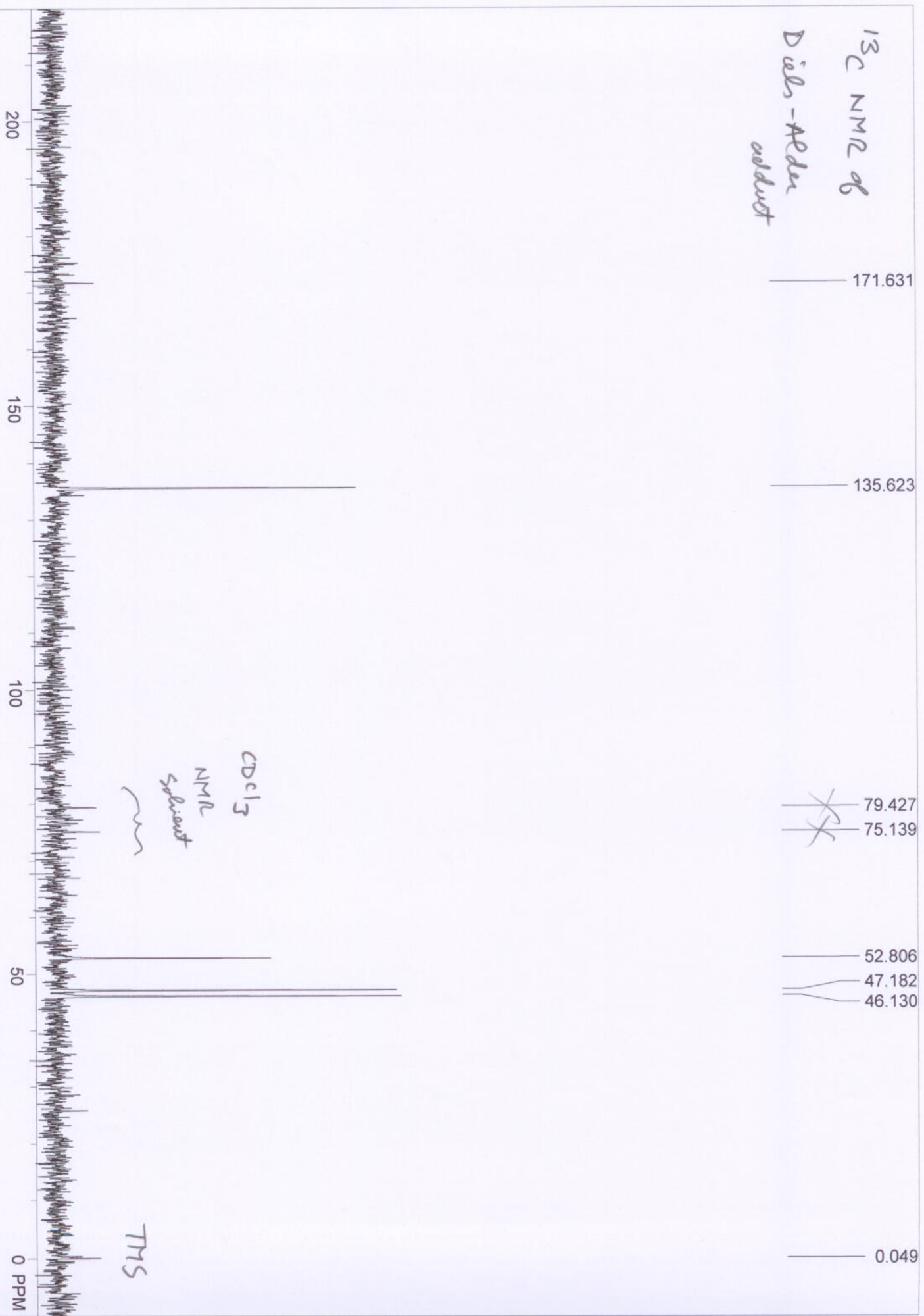
Diels Alder Adduct

F1: 60.010	SW1: 1000	OF1: 334.9	PTSId: 8192
EX: zgpgpg	PW: 17.1 us	PD: 3.0 sec	NA: 4
		LB: 0.0	

USER: Undefined -- DATE: 03/06/13 (13:55)

Nuts - temp

<sup>13</sup>C NMR of  
Diels-Alder  
adduct



171.631

135.623

~~79.427~~

~~75.139~~

52.806

47.182

46.130

0.049

CDCl<sub>3</sub>  
NMR  
solvent

TMS

Diels Alder Adduct  
F1: 15.089  
EX: zg.ppg  
SW1: 5000  
PW: 20.1 us  
PD: 3.4 sec  
OF1: 1521.0  
NA: 144  
LB: 0.5  
PTSID: 8192  
USER: Undefined -- DATE: 03/06/13 (14:13)  
Nuts - temp

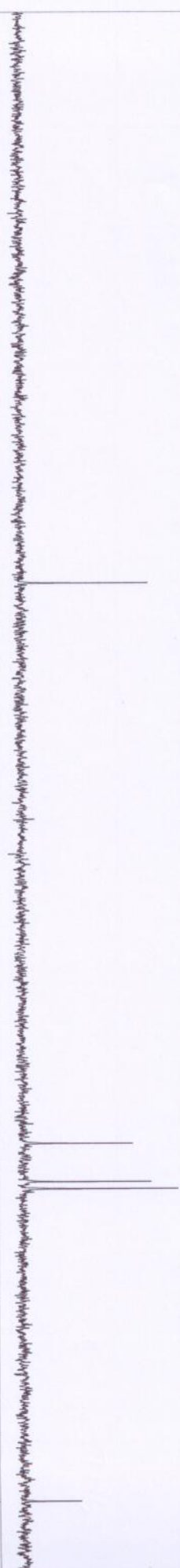
1350



90°



45°



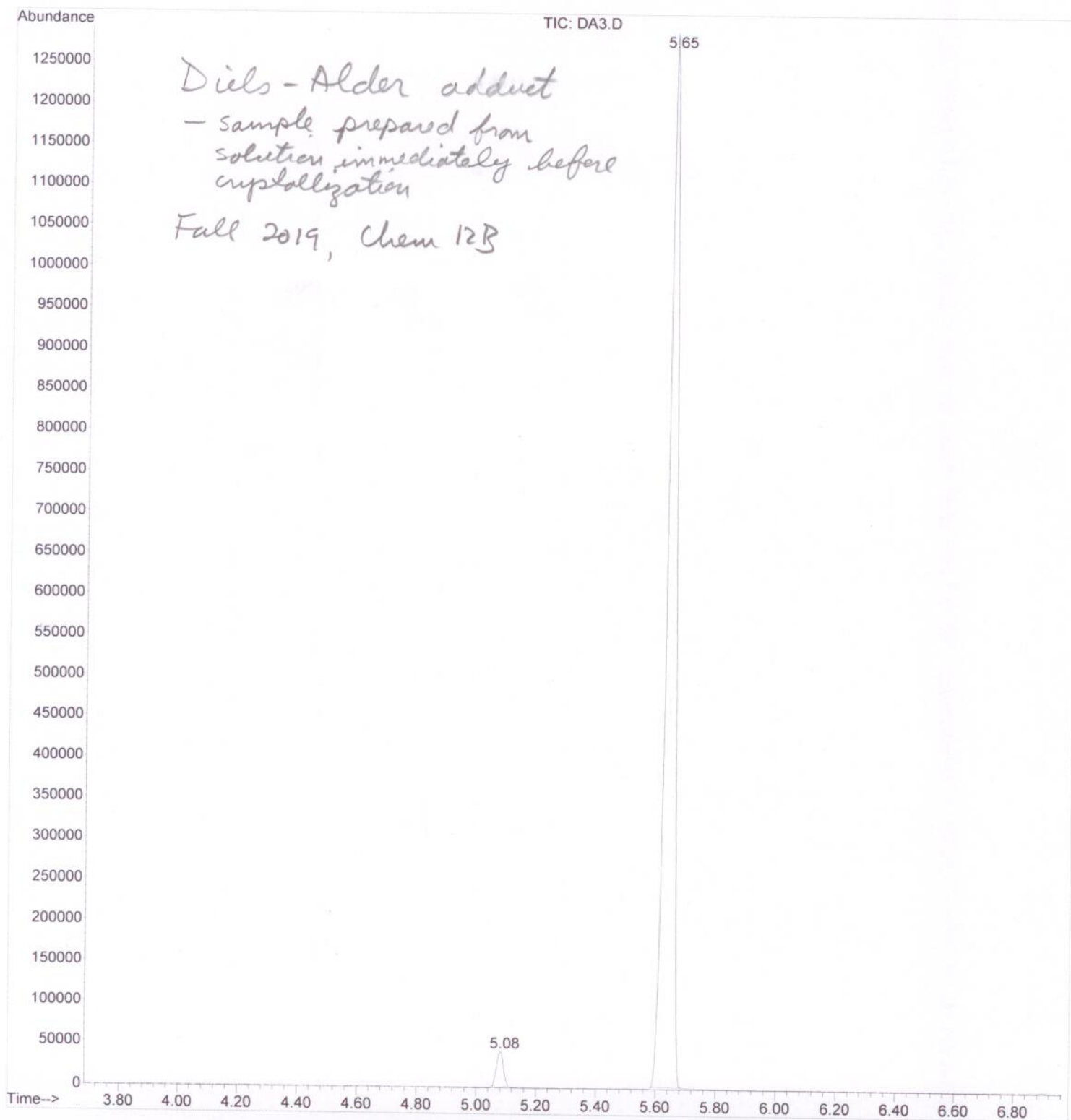
200 150 100 50 0 PPM

Diels Alder Adduct

F1: 15.089	SW1: 5000	SW2: 0	OF1: 1521.0	OF2: 360.0	PTSID: 8192	PTS2d: 1	3
EX: dept.ppg	PW: 20.1 us	PD: 3.4 sec	NA: 60	LB: 0.5			Nuts - temp

USER: Undefined --- DATE: 03/06/13 (14:15)

File : C:\MSDCHEM\1\DATA\191105C\Snapshot\DA3.D  
Operator : sac  
Acquired : 5 Nov 2019 11:23 am using AcqMethod DIELS7.M  
Instrument : Instrument #1  
Sample Name: Diels Alder  
Misc Info :  
Vial Number: 2



Area Percent Report

Data Path : C:\MSDCHEM\1\DATA\191105C\Snapshot\  
 Data File : DA3.D  
 Acq On : 5 Nov 2019 11:23 am  
 Operator : sac  
 Sample : Diels Alder  
 Misc :  
 ALS Vial : 2 Sample Multiplier: 1

Integration Parameters: autoint1.e  
 Integrator: ChemStation

Method : C:\MSDCHEM\1\METHODS\ENVDEF.M  
 Title :

Signal : TIC

peak #	R.T. min	first scan	max scan	last scan	PK TY	peak height	corr. area	corr. % max.	% of total
1	5.080	1193	1199	1205	M2	40094	649889	2.46%	2.401%
2	5.647	1321	1335	1343	M	1286549	26413108	100.00%	97.599%

Sum of corrected areas: 27062997

ENVDEF.M Tue Nov 05 11:35:14 2019