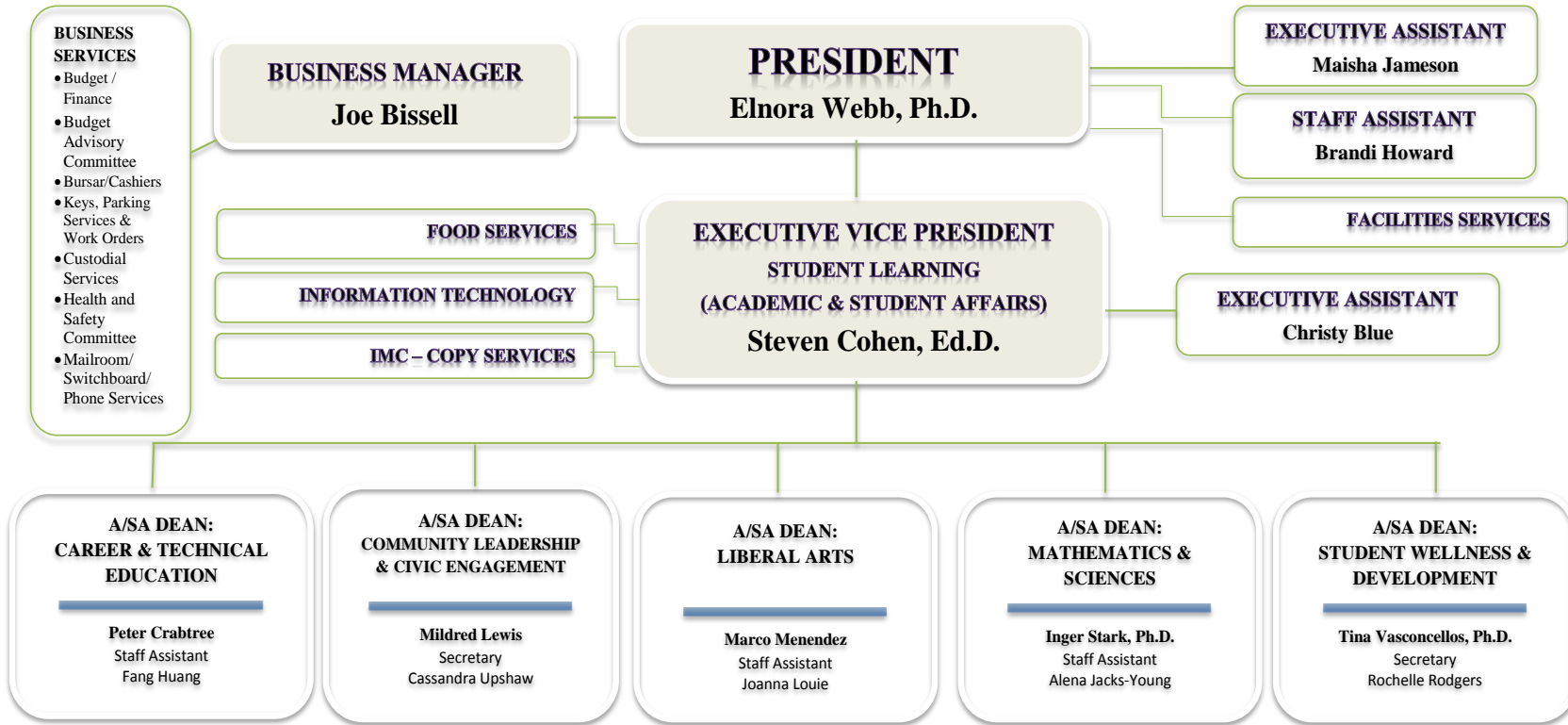


# LANEY COLLEGE ORGANIZATIONAL CHART – 2012-13



- **AA:** Center for Green Technology: Architecture, Engineering, ECT, Electricity/Industrial Controls, EBCAA Construction Trades: Carpentry, Construction Mgmt, Wood Techn. Cosmetology (Salon and spa/Institute) Culinary Arts Industrial Maintenance & Advanced Manufacturing: Machine Tech, Welding
- **SA:** Career Center/ Placement Services Contract Education Coop Education Coordination Workforce Development: Apprenticeships, Internships
- **ED L:** Fee-Based Coordination
- **SG/R:** CTE Advisory Committee

- **AA:** Business & Economics Center for Business and Community Leadership Education Learning Communities\*2: APASS; Gateway Academy; Green Jobs Training; LEAP; Project Bridge; Puente; UBAKA; B2B Foundation (Basic) Skills Coordination Service Learning Coordination
- **SA:** Educational Equity Programs including EOP/S, CARE and CalWORKs A&R and FA Liaison(s) Assessment Center Welcome Center/Outreach\*3 /Safety Aides
- **ED L:** Grants Coordination
- **SG/R:** Foundation Skills Committee, Professional Development Committee

- **AA:** Language Arts: English, ESL, Foreign Languages (Chinese, French, Spanish, Japanese) Mass Communication & Design: Graphic Arts; Journalism, Media, Photography Humanities: Communications; Humanities and Philosophy Performing & Visual Arts: Art; Dance; Music; Theatre
- **SA:** Art Gallery Writing Center ASLC Leadership & Governance Activities: student clubs, student life Student Engagement/Stud. Activities Graduation
- **ED L:** Strategic & Educational Planning Coordination; Events Committee
- **SG/R:** Student Affairs Council & Facilities Planning Committee

- **AA:** Computer Information Systems Earth and Human Studies: Anthro; Geography; Geology Ethnic Studies: AFRAM; ASAME; Mexican/Latin American Studies; Native American Studies Mathematics Natural Sciences: Biology, Chemistry, Physics, Astronomy Social Sciences: History, Labor Studies, LIS, Political Science, Psychology, Sociology
- **SA:** Instructional/Learning Resources - College Tutor Planning/ College Instructional Labs: CIS, BUS, LANG, LIB/MEDIA, MATH, TECH CTR, Instructional Technology of the College Instructional Lab (see above)
- **ED L:** Enrollment Management/ Class Schedule Planning Coordination
- **SG/R:** Technology Planning Committee

- **AA:** Counseling Instruction Center for Health and Wellness Distance Education Center Physical Education (with Fitness Center & Health Education)
- **SA:** Articulation Counseling Services Athletics: baseball, basketball, football, track, swimming, volleyball, water polo DSPS Transfer Center Veteran Affairs
- **ED L:** Health Services and Wellness Coordination & College-wide SLO Assessment Coordination
- **SG/R:** Matriculation Committee (including the Student Equity Committee)